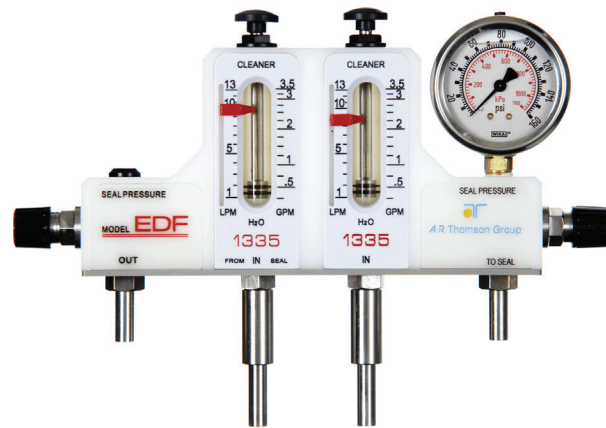


Flowmeter MODEL EDF

Save resources and extend seal life



The Dual Flow (EDF) flowmeter is the ideal partner for applications requiring uninterrupted seal water flow for cooling and lubrication. The model is compatible with all seal types. Modular construction and various options make this flowmeter flexible and versatile.

Specifications

Body:

POM (standard) or Kynar (option K)

Metering Tube:

Polysulphone (PSU)

*Standard material - freeze resistant

Metallic Parts:

AISI 316 and AISI 329

Seals:

Viton

Pressure, Max:

435 psi at 120°F

Temperature, max:

POM body/PSU tube: 212°F (100°C)

Kynar body/PSU tube: 266°F

Connection:

Standard 3/8" OD tube (for compression fitting)

Weight:

5 lbs / 2.3 kg c/w pressure gauge, all fittings and packaging

Benefits

Reliable operation

Solid construction

Excellent corrosion and heat resistance

Clear detachable metering scale

Built-in pressurizing valve

Alarm ready

Clog resistant flow control valve

3 connector options

Mounting bracket

Built-in tube cleaner

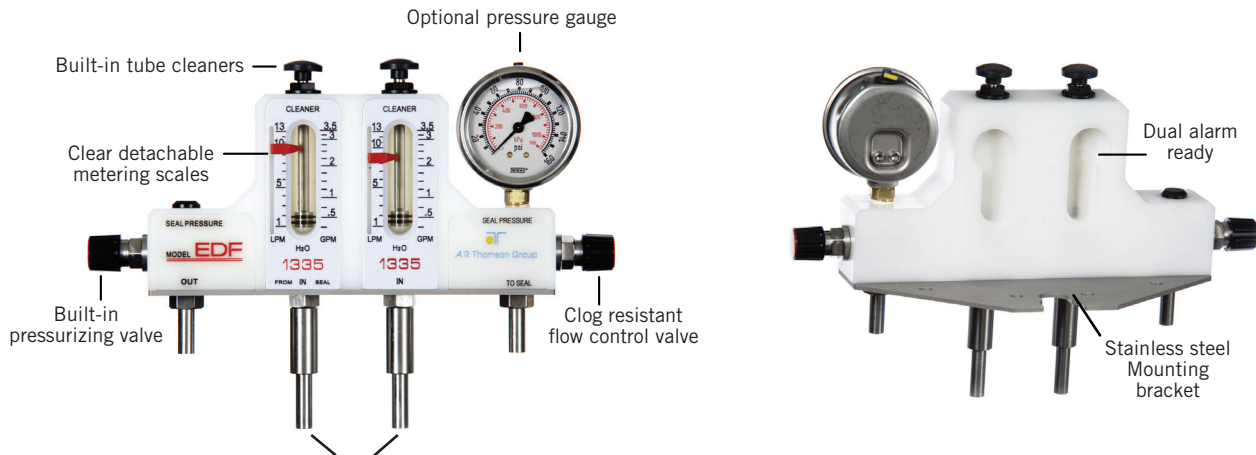
PSU (polysulphone) tube - freeze resistant

Easy access to the flowmeter fittings as all connectors are in a straight line

Ideal for

Double mechanical seals

Standard EDF dual model: Re-order part # EDF1335-PSEXXX

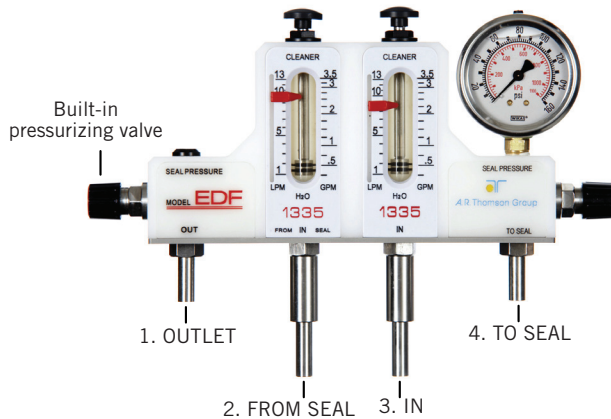


Standard 3/8" Stainless steel straight tube connectors, suggest Parker CPI tube x PushLok hose connector 6-6 P2BZ6-SS (3/8" Parker C836 PushLok hose) alternate connections available.
 **See ordering information

Options

- Glass tube
- Inductive adjustable alarm
- Pressure gauge
- Floor mounting stand
- Hose barb connectors, straight tube connectors for compression fittings or 3/8" compression fittings.

Hose connections



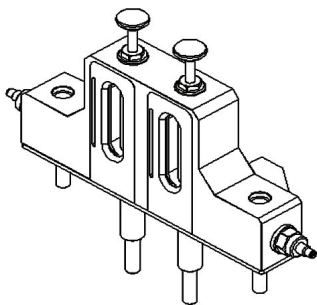
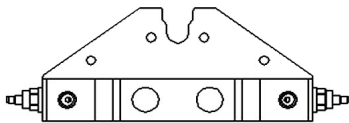
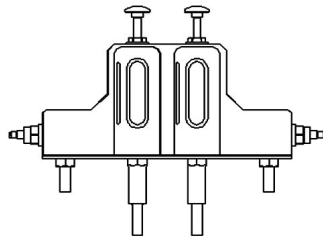
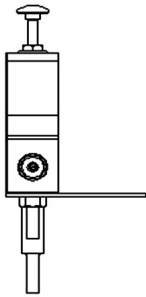
1. **OUTLET:** Discharge line to drain or recirculation
2. **FROM SEAL:** Water return from seal to pressurizing valve
3. **IN:** Gland water inlet
4. **TO SEAL:** Water feed to seal

AUTHORIZED DISTRIBUTOR

ARTG10519

EDF

350								
120								
1335								
82								



Dual Flow Monitor

3 LPM	50 USGPH
1 LPM	20 USGPH
13 LPM	3.5 USGPM
8 LPM	2 USGPM

Body Material

Delrin (POM) STANDARD
Kynar

Connection Type

3/8" ID hosebarb
3/8" OD straight tube
3/8" compression fitting (c/w nut and 2 ferrules)

Pressure Gauge

A	15 psi
B	30 psi
C	60 psi
D	100 psi
E	160 psi Standard
F	200 psi
G	300 psi
H	400 psi
I	100 psi with red set pointer
J	160 psi with red set pointer
K	200 psi with red set pointer
L	300 psi with red set pointer
M	400 psi with red set pointer

Options

	Back pressure valve (included with EDF)
S	Stand
A	Alarm 10-55 VDC 150 mA (IG 5919)
B	Alarm 20-250 VAC/DC 300 mA (IG 0374)
C	Dual Alarm 10-55 VDC 150 mA
D	Dual Alarm 20-250 VAC/DC 300 mA

Optional Hose Assembly Items

Fitting for hoses

A	1/4" NPT x 3/8" ID Hosebarb (AD1/4N3/8H)
B	3/8" NPT x 3/8" ID Hosebarb (AD3/8N3/8H)
C	1/2" NPT x 3/8" ID Hosebarb (AD1/2N3/8H)
D	1/4" R x 3/8" ID Hosebarb (AD1/4R3/8H)
E	3/8" R x 3/8" ID Hosebarb (AD3/8R3/8H)
F	1/2" R x 3/8" ID Hosebarb (AD1/2R3/8H)

Hose

X Quantity (1-4) of 5 Foot length hose c/w SS Hosebarb clamps (HO3/8X300X5)

Check Valve

A	1/4" NPT x 3/8" ID Hosebarb Check valve ES-2029-1
B	3/8" NPT x 3/8" ID Hosebarb Check valve ES-2029
C	1/2" NPT x 3/8" ID Hosebarb Check valve ES-2004
D	1/4" NPT x 3/8" tube compression fitting Check valve ES-
E	3/8" NPT x 3/8" tube compression fitting Check valve ES-2075
F	1/2" NPT x 3/8" tube compression fitting Check valve ES-2074