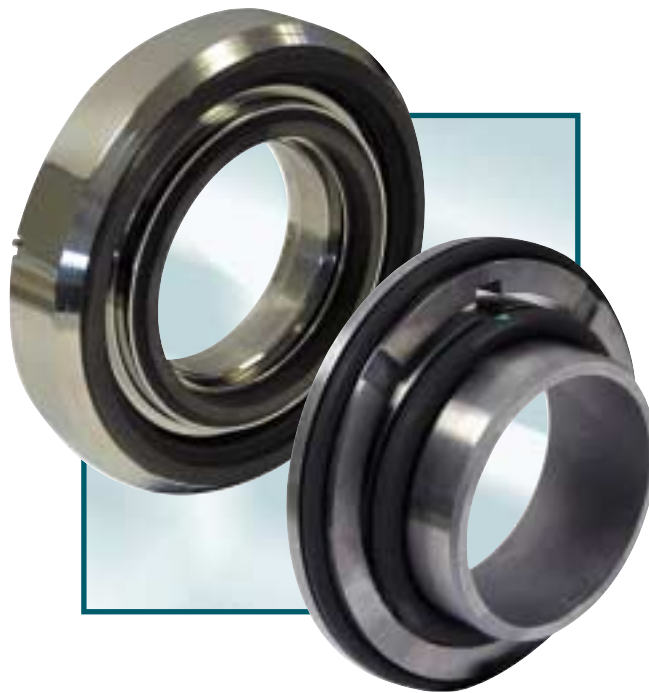




WUPS[™] Modular Component Seal

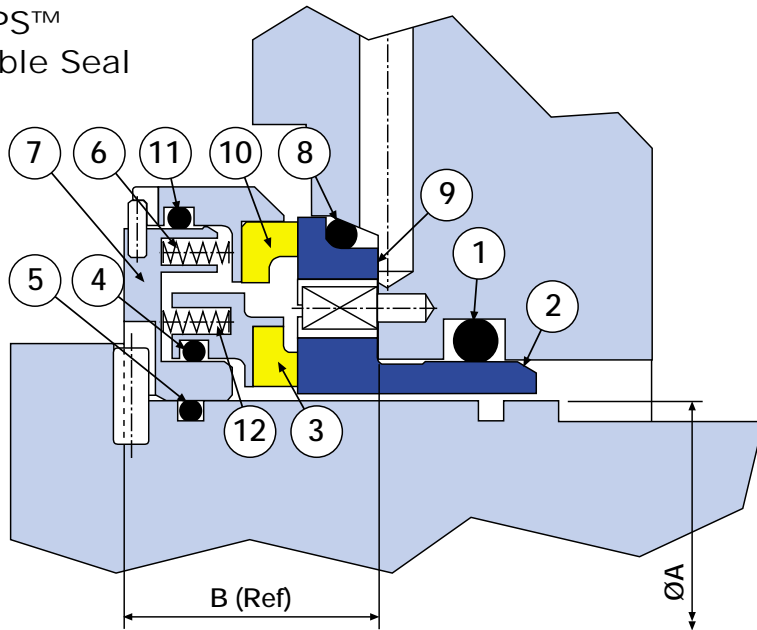


- DESIGNED FOR THE WAUKESHA UNIVERSAL (1) PUMP RANGE
- SINGLE & DOUBLE SEAL OPTIONS
- HIGH BARRIER FLUID PRESSURE OPTION (DOUBLE SEAL ONLY)
- BALANCED SEAL FACES
- NO PUMP MODIFICATIONS
- PATENT PENDING

WUPS™ - seal designs for Waukesha Universal (1) Pumps

The innovative patent pending, modular AESSEAL® WUPS™ seal range is available in both Single and Double component seal variants.

WUPS™ Double Seal



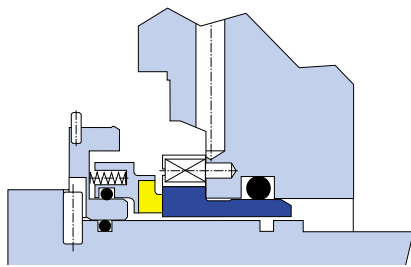
As the double seal faces are hydraulically balanced, the seal operates with high barrier fluid pressure.

Other design features include:

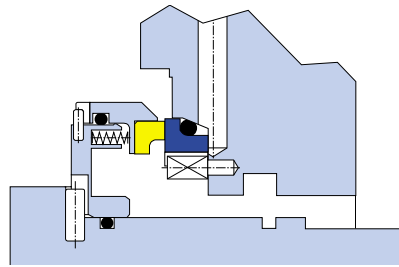
- No pump modifications required
- Multi-spring design for even seal face loading
- Hydraulically balanced seal faces
- Pressure balanced seal faces
- High barrier fluid option for double seals
- Hard face options available
- Retained rotary seal faces to facilitate installation

Please consult the AESSEAL® Technical department for further information on this product.

Contact your nearest sales outlet to confirm product availability.



WUPSS™ - Single Seal
Without Flush



WUPSF™ - Single Seal
With Flush

WUPS™ - Standard Seal Dimensional Information

Waukesha Universal (1) Pumps	ØA	ØB
Model 30	1.500" (38.1mm)	0.575" (14.6mm)
Model 60 / 130	1.875" (47.6mm)	1.125" (28.5mm)

Item	Description	Material
1	Stationary O Ring	Viton® / EPR / Kalrez® / Aflas®
2	Stationary Face	316L SS-CrOx*-TC
3	Rotary Face	316L SS-Carbon-TC
4	Rotary O Ring	Viton® / EPR / Kalrez® / Aflas®
5	Rotary Carrier O Ring	Viton® / EPR / Kalrez® / Aflas®
6	Springs	Alloy 276 / Stainless Steel
7	Rotary Carrier	316L Stainless Steel
8	Stationary O Ring	Viton® / EPR / Kalrez® / Aflas®
9	Stationary Face	316L SS-CrOx*-TC
10	Rotary Face	316L SS-Carbon-TC
11	Rotary O Ring	Viton® / EPR / Kalrez® / Aflas®
12	Springs	Alloy 276 / Stainless Steel

*CrOx not available for the Model 30 seal design.

THIS DOCUMENT IS DESIGNED TO PROVIDE DIMENSIONAL INFORMATION AND AN INDICATION OF AVAILABILITY. FOR FURTHER INFORMATION AND SAFE OPERATING LIMITS CONTACT OUR TECHNICAL SPECIALISTS AT THE LOCATIONS BELOW.



USE DOUBLE MECHANICAL SEALS WITH HAZARDOUS PRODUCTS. ALWAYS TAKE SAFETY PRECAUTIONS:

- GUARD YOUR EQUIPMENT
- WEAR PROTECTIVE CLOTHING



AESSEAL plc
Mill Close
Templeborough
Rotherham
S60 1BZ
United Kingdom

Telephone:
Fax:
E-mail:
Internet:

Copyright © 2002 AESSEAL plc

WINNER OF THE
NATWEST
SUNDAY TIMES
COMPANY OF
TOMORROW
AWARD

+44 (0) 1709 369966
+44 (0) 1709 720788
seals@aes seal.com
http://www.aes seal.com

Distributed by:

USA Sales & Technical advice:
AESSEAL Inc.
10231 Cogdill Road
Suite 105
Knoxville, TN 37932
USA

Telephone: 865 531 0192
Fax: 865 531 0571

ALL SIZES ARE SUBJECT TO MANUFACTURING TOLERANCES. WE RESERVE THE RIGHT TO MODIFY SPECIFICATIONS AT ANY TIME.

WUPS™, WUPSS™ and the WUPSF™ are Trademarks of AESSEAL plc
Registered Trademarks: AESSEAL® - AESSEAL plc
Viton®, Kalrez® - DuPont Dow Elastomers Aflas® - Asahi Glass Co.