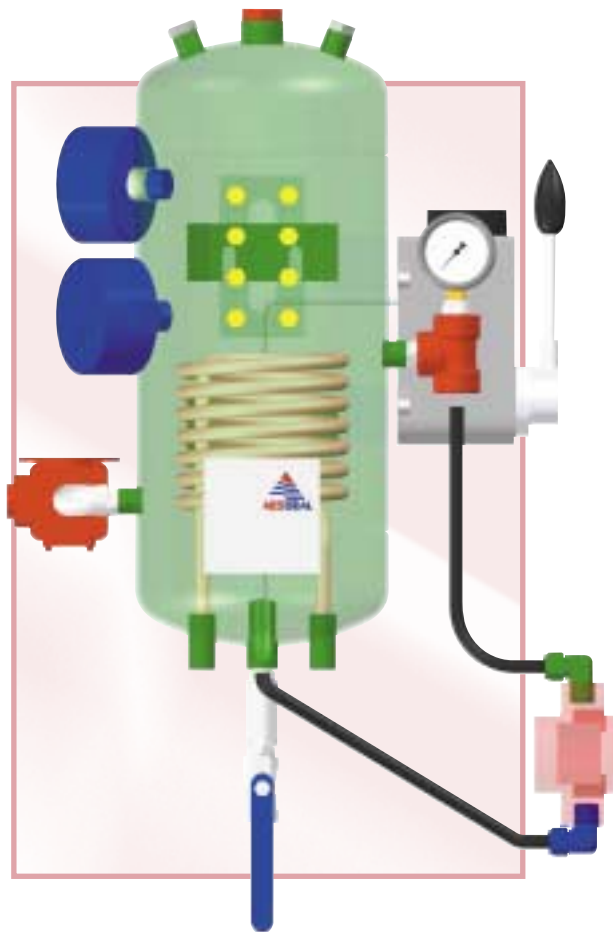


## US15<sup>™</sup> ASME VIII VESSEL SYSTEM RANGE

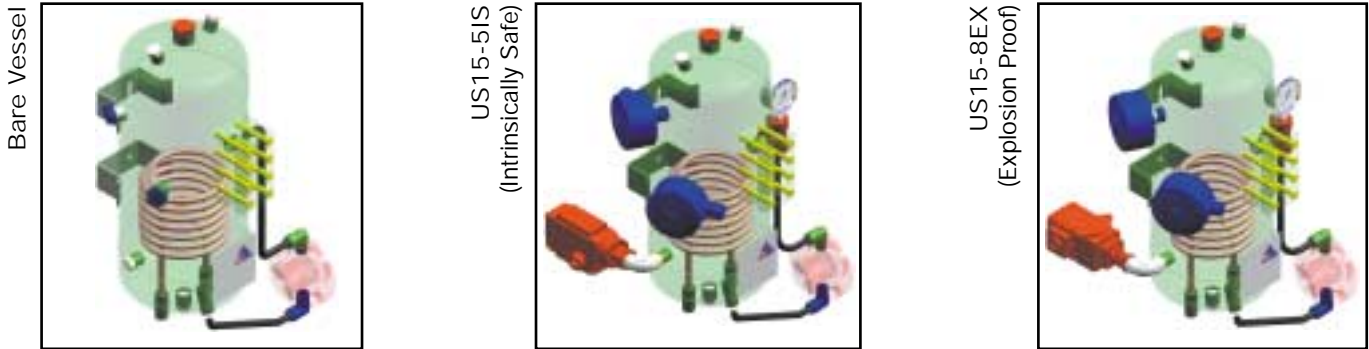


- MODULAR SYSTEM RANGE
- WIDE RANGE OF INVENTORIED OPTIONS AVAILABLE
- DESIGN CODE ALLOWS FOR WIDEST POSSIBLE SITE ACCEPTANCE
- INTRINSICALLY SAFE AND FLAMEPROOF MODELS AS STANDARD
- FACTORY ASSEMBLED TESTED AND CERTIFIED

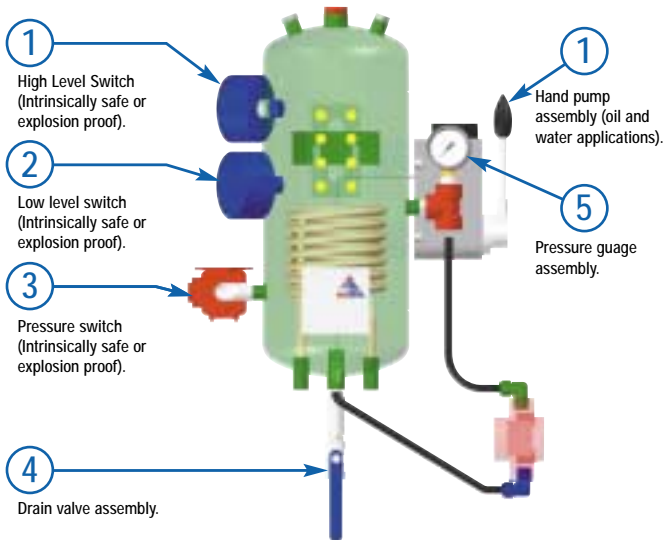
# US15™ - ASME VIII Vessel System Range

Market demand has pushed AESSEAL® to develop a new type of system within the ASME range. The AS15™ is a modular vessel which allows the easy installation of instrumentation from level switches to pressure transmitters.

A wide range of inventoried options are available to cater for both intrinsically safe and explosion proof instrumentation.



## Option Layout



With a wide range of inventoried options.  
\*Seal and fittings not supplied as standard.

## US15™ System Benefits

- Design code allows for widest possible site acceptance
- Modular design and factory testing reduces product lead time whilst ensuring no on-site tests
- The 'ready to go' design ensures all required components are shipped as part of the system
- Large tank capacity guarantees greater heat dump
- Full cooling coil as standard allows for additional cooling at no extra cost
- Slotted mounting brackets ensure ease of on site installation

## US15™ System Features

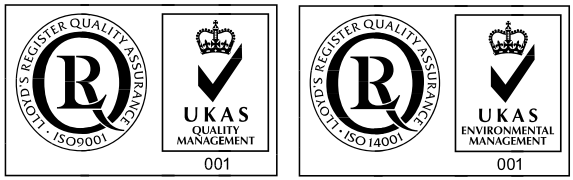
- Large 15 litre (3.96 US Gal) compact capacity
- Design code Asme VIII Div. 1 (not U stamped)
- Design rating 30 barg @ 200°C (435 psig @ 392°F)
- Complete modular range supplied pre-assembled and pressure tested
- Available to suit intrinsically safe (IS) and flameproof (EX) specifications

US15™ SYSTEM RANGE	
Vessel with cooling coil & level gauge	Level switch-high / low (Exd / IS) - top entry
Pressure gauge assembly	Oil handpump assembly
Pressure switch (EXD) (*1)	Water handpump assembly
Pressure switch (IS) (*1)	Orifice plate (Plan 52)
Pressure transmitter (Exd / IS) (*1)	100% dye pen of all welds (vessel)
Level transmitter (Exd / IS) cw 5 valve manifold	100% X-ray of all welds (*2) (vessel)
Level switch high (Exd / IS) - side entry level	Vent / Drain / Fill valve - screwed
Switch low (Exd / IS) - side entry	

(\*1) If any of these items are selected a pressure gauge assembly must also be fitted.  
(\*2) If this option is required X-ray is only for end cap to body welds on the vessels.

**BARRIER & BUFFER FLUID SYSTEMS FOR USE WITH DOUBLE MECHANICAL SEALS**  
 AESSEAL® supplies an extensive range of barrier and buffer fluid systems for use with double mechanical seals. Wherever possible AESSEAL® prefers to supply both the seal and the system. In addition the company will suggest suitable barrier or buffer fluids for most applications, based on extensive field experience.  
 AESSEAL® accepts no responsibility for any problems associated with system design, installation, operation, or the use of an unsuitable barrier or buffer fluid, where the fluid, seal or any part of the system have not been specified and/or supplied by AESSEAL®

THIS DOCUMENT IS DESIGNED TO PROVIDE DIMENSIONAL INFORMATION AND AN INDICATION OF AVAILABILITY.  
 FOR FURTHER INFORMATION AND SAFE OPERATING LIMITS CONTACT OUR TECHNICAL SPECIALISTS AT THE LOCATIONS BELOW.



**USE DOUBLE MECHANICAL SEALS WITH HAZARDOUS PRODUCTS. ALWAYS TAKE SAFETY PRECAUTIONS:**

- GUARD YOUR EQUIPMENT
- WEAR PROTECTIVE CLOTHING



**WARNING**

AESSEAL plc  
 Mill Close  
 Templeborough  
 Rotherham  
 S60 1BZ  
 United Kingdom



Telephone: +44 (0) 1709 369966  
 Fax: +44 (0) 1709 720788  
 E-mail: seals@aes seal.com  
 Internet: http://www.aes seal.com

Distributed by:

USA Sales & Technical advice:  
 AESSEAL Inc.  
 10231 Cogdill Road  
 Suite 105  
 Knoxville, TN 37932  
 USA  
 Telephone: +1 865 531 0192  
 Fax: +1 865 531 0571

Sales & Technical advice:  
 AESSEAL (MCK) Ltd.  
 139A Hillsborough Old Road  
 Lisburn  
 N.Ireland  
 BT27 5QE  
 Telephone: +44 (0) 28 9266 9966  
 Fax: +44 (0) 28 9266 9977  
 Tel/Fax Hotline: +44 (0) 28 9266 9988  
 E-mail: MCK@aes seal.co.uk

ALL SIZES ARE SUBJECT TO MANUFACTURING TOLERANCES.  
 WE RESERVE THE RIGHT TO MODIFY SPECIFICATIONS AT ANY TIME.