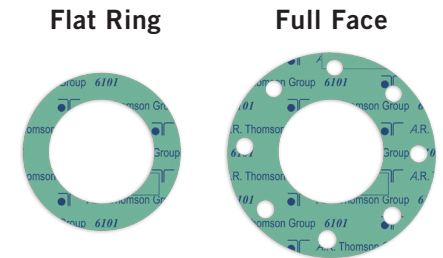
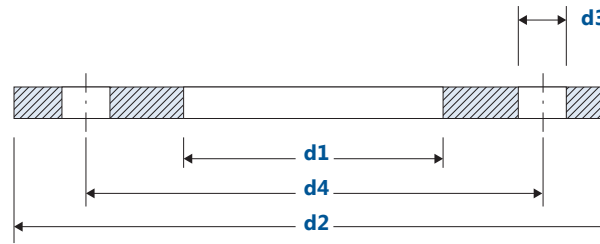


# Non Metallic Gasket Dimensions

ASME B16.21 Non Metallic Gaskets  
For ASME B16.1, B16.5, B16.24 and MSS SP-51 Flanges



## Class 25 LB ASME B16.1

Nominal Pipe Size	Gasket I.D.	FLAT RING O.D.	FULL FACE			
	d1	d2	O.D.	# of Bolt Holes	Bolt Hole D.	Bolt Circle D.
4	4.50	6.88	9.00	8	0.75	7.50
5	5.56	7.88	10.00	8	0.75	8.50
6	6.62	8.88	11.00	8	0.75	9.50
8	8.62	11.12	13.50	8	0.75	11.75
10	10.75	13.62	16.00	12	0.75	14.25
12	12.75	16.38	19.00	12	0.75	17.00
14	14.00	18.00	21.00	12	0.88	18.75
16	16.00	20.50	23.50	16	0.88	21.25
18	18.00	22.00	25.00	16	0.88	22.75
20	20.00	24.25	27.50	20	0.88	25.00
24	24.00	28.75	32.00	20	0.88	29.50
30	30.00	35.12	38.75	28	1.00	36.00
36	36.00	41.88	46.00	32	1.00	42.75
42	42.00	48.50	53.00	36	1.12	49.50
48	48.00	55.00	59.50	44	1.12	56.00
54	54.00	61.75	66.25	44	1.12	62.75
60	60.00	68.12	73.00	52	1.25	69.25
72	72.00	81.38	86.50	60	1.25	82.50
84	84.00	94.25	99.75	64	1.38	95.50
96	96.00	107.25	113.25	68	1.38	108.50

## Class 125 LB ASME B16.1

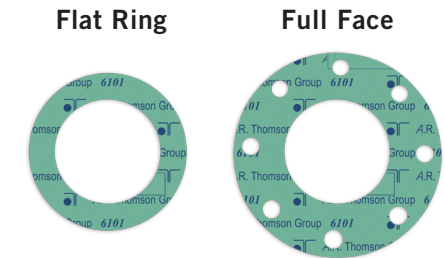
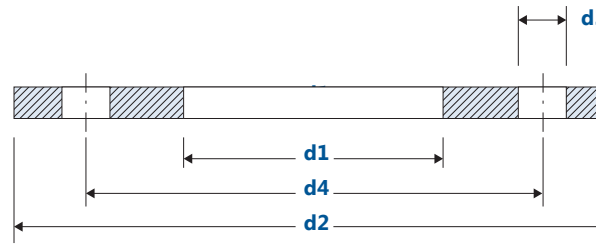
Nominal Pipe Size	Gasket I.D.	FLAT RING O.D.	FULL FACE			
	d1	d2	O.D.	# of Bolt Holes	Bolt Hole D.	Bolt Circle D.
1	1.31	2.62	4.25	4	0.62	3.12
1-1/4	1.66	3.00	4.62	4	0.62	3.50
1-1/2	1.91	3.38	5.00	4	0.62	3.88
2	2.38	4.12	6.00	4	0.75	4.75
2-1/2	2.88	4.88	7.00	4	0.75	5.50
3	3.50	5.38	7.50	4	0.75	6.00
3-1/2	4.00	6.38	8.50	8	0.75	7.00
4	4.50	6.88	9.00	8	0.75	7.50
5	5.56	7.75	10.00	8	0.88	8.50
6	6.62	8.75	11.00	8	0.88	9.50
8	8.62	11.00	13.50	8	0.88	11.75
10	10.75	13.38	16.00	12	1.00	14.25
12	12.75	16.12	19.00	12	1.00	17.00
14	14.00	17.75	21.00	12	1.12	18.75
16	16.00	20.25	23.50	16	1.12	21.25
18	18.00	21.62	25.00	16	1.25	22.75
20	20.00	23.88	27.50	20	1.25	25.00
24	24.00	28.25	32.00	20	1.38	29.50
30	30.00	34.75	38.75	28	1.38	36.00
36	36.00	41.25	46.00	32	1.62	42.75
42	42.00	48.00	53.00	36	1.62	49.50
48	48.00	54.50	59.50	44	1.62	56.00

General notes: Dimensions in inches.  
d1 = Gasket I.D. (inner diameter)  
d2 = Gasket Full Face O.D. (outer diameter)

d3 = Gasket Full Face Bolt Hole Diameter  
d4 = Gasket Full Face Bolt Circle Diameter

# Non Metallic Gasket Dimensions

ASME B16.21 Non Metallic Gaskets  
For ASME B16.1, B16.5, B16.24 and MSS SP-51 Flanges



## Class 150 LB ASME B16.5, B16.24 & MSS SP-51

Nominal Pipe Size	Gasket I.D.	FLAT RING O.D.	FULL FACE			
	d1	O.D.	O.D.	# of Bolt Holes	Bolt Hole D.	Bolt Circle D.
	d1		d2		d3	d4
1/4 (1)	0.56	-	2.50	4	0.44	1.69
3/8 (1)	0.69	-	2.50	4	0.44	1.69
1/2	0.84	1.88	3.50	4	0.62	2.38
3/4	1.06	2.25	3.88	4	0.62	2.75
1	1.31	2.62	4.25	4	0.62	3.12
1-1/4	1.66	3.00	4.63	4	0.62	3.50
1-1/2	1.91	3.38	5.00	4	0.62	3.88
2	2.38	4.12	6.00	4	0.75	4.75
2-1/2	2.88	4.88	7.00	4	0.75	5.50
3	3.50	5.38	7.50	4	0.75	6.00
3-1/2 (3)	4.00	6.38	8.50	8	0.75	7.00
4	4.50	6.88	9.00	8	0.75	7.50
5	5.56	7.75	10.00	8	0.88	8.50
6	6.62	8.75	11.00	8	0.88	9.50
8	8.62	11.00	13.50	8	0.88	11.75
10	10.75	13.38	16.00	12	1.00	14.25
12	12.75	16.13	19.00	12	1.00	17.00
14 (2)	14.00	17.75	21.00	12	1.12	18.75
16 (2)	16.00	20.25	23.50	16	1.12	21.25
18 (2)	18.00	21.62	25.00	16	1.25	22.75
20 (2)	20.00	23.88	27.50	20	1.25	25.00
22 (2)	22.00	26.00	29.50	20	1.38	27.25
24 (2)	24.00	28.25	32.00	20	1.38	29.50

## Class 250 LB ASME B16.1

Nominal Pipe Size	Gasket I.D.	FLAT RING O.D.	FULL FACE			
	d1	O.D.	O.D.	# of Bolt Holes	Bolt Hole D.	Bolt Circle D.
	d1		d2		d3	d4
1/2 (1)	0.84	2.12	3.75	4	0.62	2.62
3/4 (1)	1.06	2.62	4.62	4	0.75	3.25
1	1.31	2.88	4.88	4	0.75	3.50
1-1/4	1.66	3.25	5.52	4	0.75	3.88
1-1/2	1.91	3.75	6.12	4	0.88	4.50
2	2.38	4.38	6.50	8	0.75	5.00
2-1/2	2.88	5.12	7.50	8	0.88	5.88
3	3.50	5.88	8.25	8	0.88	6.62
3-1/2	4.00	6.50	9.00	8	0.88	7.25
4	4.50	7.12	10.00	8	0.88	7.88
5	5.56	8.50	11.00	8	0.88	9.25
6	6.62	9.88	12.50	12	0.88	10.62
8	8.62	12.12	15.00	12	1.00	13.00
10	10.75	14.25	17.50	16	1.12	15.25
12	12.75	16.62	20.50	16	1.25	17.75
14	14.00	19.12	23.00	20	1.25	20.25
16	16.00	21.25	25.50	20	1.37	22.50
18	18.00	23.50	28.00	24	1.37	24.75
20	20.00	25.75	30.50	24	1.37	27.00
24	24.00	30.50	36.00	24	1.62	32.00
30	30.00	30.00	37.50	-	-	-
36	36.00	36.00	44.00	-	-	-
42	42.00	42.00	50.75	-	-	-
48	48.00	48.00	58.75	-	-	-

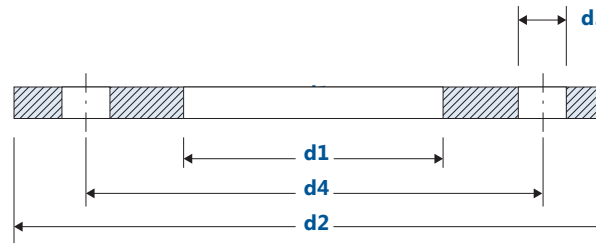
(1) Only for gaskets for MSS SP-51 Flange  
(2) Except for gaskets for ASME B16.24 Flange

(3) Except for gaskets for MSS SP-51 Flange  
(4) Dimensions are not included in ASME B16.21 Code

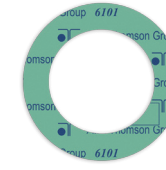
# Non Metallic Gasket Dimensions

ASME B16.21 Non Metallic Gaskets

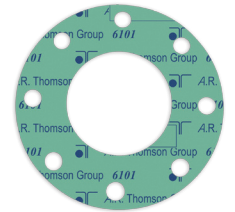
For ASME B16.1, B16.5, B16.24 and MSS SP-51 Flanges



Flat Ring



Full Face



## Class 300 LB ASME B16.5 & B16.24

Nominal Pipe Size	Gasket I.D.	FLAT RING O.D.	FULL FACE			
	d1		O.D. d2	# of Bolt Holes	Bolt Hole D. d3	Bolt Circle D. d4
1/2	0.84	2.12	3.75	4	0.62	2.62
3/4	1.06	2.62	4.62	4	0.75	3.25
1	1.31	2.88	4.88	4	0.75	3.50
1-1/4	1.66	3.25	5.25	4	0.75	3.88
1-1/2	1.91	3.75	6.12	4	0.88	4.50
2	2.38	4.38	6.50	8	0.75	5.00
2-1/2	2.88	5.12	7.50	8	0.88	5.88
3	3.50	5.88	8.25	8	0.88	6.62
3-1/2	4.00	6.50	9.00	8	0.88	7.25
4	4.50	7.12	10.00	8	0.88	7.88
5	5.56	8.50	11.00	8	0.88	9.25
6	6.62	9.88	12.50	12	0.88	10.62
8	8.62	12.12	15.00	12	1.00	13.00
10 (2)	10.75	14.25	17.50	16	1.12	15.25
12 (2)	12.75	16.62	20.50	16	1.25	17.75
14 (2)	14.00	19.12	23.00	20	1.25	20.25
16 (2)	16.00	21.25	25.50	20	1.37	22.50
18 (2)	18.00	23.50	28.00	24	1.37	24.75
20 (2)	20.00	25.75	30.50	24	1.37	27.00
22 (2)	22.00	27.75	33.00	24	1.63	29.25
24 (2)	24.00	30.50	36.00	24	1.62	32.00
22 (2)	22.00	26.00	29.50	20	1.38	27.25
24 (2)	24.00	28.25	32.00	20	1.38	29.50

## Class 400 LB ASME B16.5

Nominal Pipe Size	Gasket I.D.	FLAT RING O.D.	FULL FACE			
	d1		O.D. d2	# of Bolt Holes	Bolt Hole D. d3	Bolt Circle D. d4
1/2	0.84	2.12	3.75	4	0.63	2.63
3/4	1.06	2.62	4.63	4	0.75	3.13
1	1.31	2.88	4.88	4	0.75	3.50
1-1/4	1.66	3.25	5.25	4	0.75	3.88
1-1/2	1.91	3.75	6.13	4	0.88	4.50
2	2.38	4.38	6.50	8	0.75	5.00
2-1/2	2.88	5.12	7.50	8	0.88	5.88
3	3.50	5.88	8.25	8	0.88	6.63
3-1/2	4.00	6.38	9.00	8	1.00	7.25
4	4.50	7.00	10.00	8	1.00	7.88
5	5.56	8.38	11.00	8	1.00	9.25
6	6.62	9.75	12.50	12	1.00	10.63
8	8.62	12.00	15.00	12	1.12	13.00
10	10.75	14.12	17.50	16	1.25	15.25
12	12.75	16.50	20.50	16	1.38	17.75
14	14.00	19.00	23.00	20	1.38	20.25
16	16.00	21.12	25.50	20	1.50	22.50
18	18.00	23.38	28.00	24	1.50	24.75
20	20.00	25.50	30.50	24	1.63	27.00
22 (3)	22.00	27.63	33.00	24	1.75	29.25
24	24.00	30.25	36.00	24	1.88	32.00

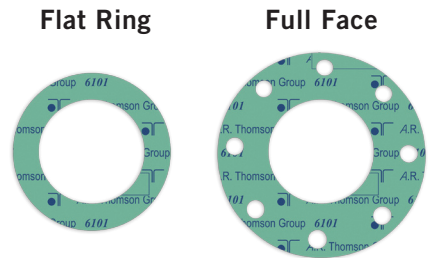
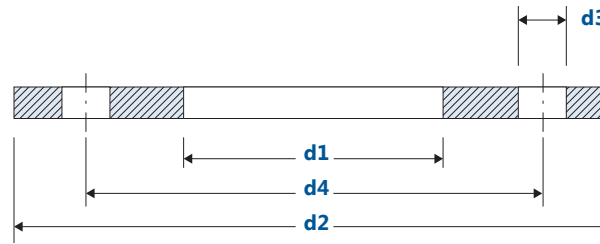
(1) Full face dimensions for ASME B16.5 flange are not included in ASME B16.21 Code.

(2) Only for gasket for ASME B16.5 Flange

(3) Dimensions are not included in ASME B16.21 Code.

# Non Metallic Gasket Dimensions

ASME B16.21 Non Metallic Gaskets  
For ASME B16.1, B16.5, B16.24 and MSS SP-51 Flanges



## Class 600 LB ASME B16.5

Nominal Pipe Size	Gasket I.D.	FLAT RING O.D.	FULL FACE			
	d1	O.D.	O.D.	# of Bolt Holes	Bolt Hole D.	Bolt Circle D.
	d1		d2		d3	d4
1/2	0.84	2.12	3.75	4	0.63	2.62
3/4	1.06	2.62	4.62	4	0.75	3.25
1	1.31	2.88	4.88	4	0.75	3.50
1-1/4	1.66	3.25	5.25	4	0.75	3.88
1-1/2	1.91	3.75	6.12	4	0.88	4.50
2	2.38	4.38	6.50	8	0.75	5.00
2-1/2	2.88	5.12	7.50	8	0.88	5.88
3	3.50	5.88	8.25	8	0.88	6.62
3-1/2	4.00	6.38	9.00	8	1.00	7.25
4	4.50	7.62	10.75	8	1.00	7.50
5	5.56	9.50	13.00	8	1.12	10.50
6	6.62	10.50	14.00	12	1.12	11.50
8	8.62	12.62	16.50	12	1.25	13.75
10	10.75	15.75	20.00	16	1.38	17.00
12	12.75	18.00	22.00	20	1.38	19.25
14	14.00	19.38	23.75	20	1.50	20.75
16	16.00	22.25	27.00	20	1.62	23.75
18	18.00	24.12	29.25	20	1.75	25.75
20	20.00	26.88	32.00	24	1.75	28.50
22 (1)	22.00	28.88	34.25	24	1.88	30.63
24	24.00	31.12	37.00	24	2.00	33.00

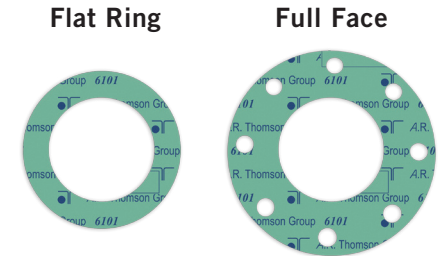
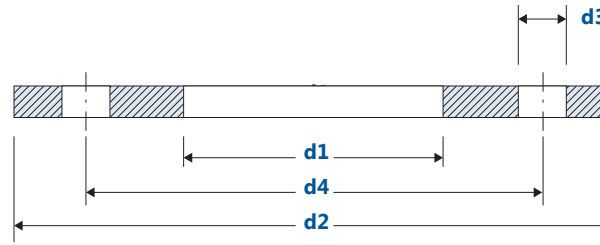
## Class 900 LB ASME B16.5

Nominal Pipe Size	Gasket I.D.	FLAT RING O.D.	FULL FACE			
	d1	O.D.	O.D.	# of Bolt Holes	Bolt Hole D.	Bolt Circle D.
	d1		d2		d3	d4
1/2	0.84	2.50	4.75	4	0.88	3.25
3/4	1.06	2.75	5.13	4	0.88	3.50
1	1.31	3.12	5.88	4	1.00	4.00
1-1/4	1.66	3.50	6.25	4	1.00	4.38
1-1/2	1.91	3.88	7.00	4	1.13	4.88
2	2.38	5.62	8.50	8	1.00	6.50
2-1/2	2.88	6.50	9.63	8	1.13	7.50
3	3.50	6.62	9.50	8	1.00	7.50
4	4.50	8.12	11.50	8	1.25	9.25
5	5.56	9.75	13.75	8	1.38	11.00
6	6.62	11.38	15.00	12	1.25	12.50
8	8.62	14.12	18.50	12	1.50	15.50
10	10.75	17.12	21.50	16	1.50	18.50
12	12.75	19.62	24.00	20	1.50	21.00
14	14.00	20.50	25.25	20	1.62	22.00
16	16.00	22.62	27.75	20	1.75	24.25
18	18.00	25.12	31.00	20	2.00	27.00
20	20.00	27.50	33.75	20	2.12	29.50
24	24.00	33.00	41.00	20	2.62	35.50

(1) Full face dimensions are not included in ASME B16.21 Code.

# Non Metallic Gasket Dimensions

ASME B16.21 Non Metallic Gaskets  
For ASME B16.1, B16.5, B16.24 and MSS SP-51 Flanges



## Class 1500 LB ASME B16.5

Nominal Pipe Size	Gasket I.D.	FLAT RING O.D.	FULL FACE			
	d1	O.D.	O.D.	# of Bolt Holes	Bolt Hole D.	Bolt Circle D.
			d2		d3	d4
1/2	0.84	2.50	4.75	4	0.88	3.25
3/4	1.06	2.75	5.13	4	0.88	3.50
1	1.31	3.12	5.88	4	1.00	4.00
1-1/4	1.66	3.50	6.25	4	1.00	4.38
1-1/2	1.91	3.87	7.00	4	1.13	4.88
2	2.38	5.62	8.50	8	1.00	6.50
2-1/2	2.88	6.50	9.63	8	1.13	7.50
3	3.50	6.87	10.50	8	1.25	8.00
4	4.50	8.25	12.25	8	1.38	9.50
5	5.56	10.00	14.75	8	1.63	11.50
6	6.62	11.12	15.50	12	1.50	12.50
8	8.62	13.87	19.00	12	1.75	15.50
10	10.75	17.12	23.00	12	2.00	19.00
12	12.75	20.50	26.50	16	2.13	22.50
14	14.00	22.75	26.50	16	2.38	25.00
16	16.00	25.25	32.50	16	2.63	27.75
18	18.00	27.25	36.00	16	2.88	30.50
20	20.00	29.25	38.75	16	3.13	32.75
24	24.00	35.50	46.00	16	3.63	39.00

## Class 900 LB ASME B16.5

Nominal Pipe Size	Gasket I.D.	FLAT RING O.D.	FULL FACE			
	d1	O.D.	O.D.	# of Bolt Holes	Bolt Hole D.	Bolt Circle D.
			d2		d3	d4
1/2	0.84	2.75	5.25	4	0.88	3.50
3/4	1.06	3.00	5.50	4	0.88	3.75
1	1.31	3.37	6.25	4	1.00	4.25
1-1/4	1.66	4.12	7.25	4	1.13	5.13
1-1/2	1.91	4.62	8.00	4	1.25	5.75
2	2.38	5.75	9.25	8	1.13	6.75
2-1/2	2.88	6.62	10.50	8	1.25	7.75
3	3.50	7.75	12.00	8	1.38	9.00
4	4.50	9.25	14.00	8	1.63	10.75
5	5.56	11.00	16.50	8	1.88	12.75
6	6.62	12.50	19.00	8	2.13	14.50
8	8.62	15.25	21.75	12	2.13	17.25
10	10.75	18.75	26.50	12	2.63	21.25
12	12.75	21.62	30.00	12	2.88	24.75

\* Dimensions are not included in ASME B16.21 Code.