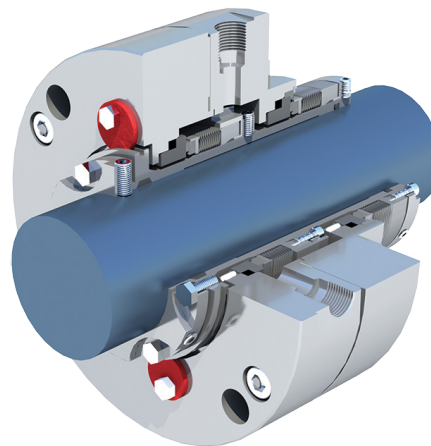


THOMSON MECHANICAL SEALS

9400-D

Double metal bellows cartridge seal with graphite seals conforming to API 682.


FEATURES

- High Temperature High pressure capability.
- Designed according to API type C, Category 2 or 3 arrangement 2 or 3 configuration 2CW-CW or 3CW-FB.
- Cartridge Design for quick and easy installation.

APPLICATIONS

- Hot Hydrocarbons.
- Oil Refining
- Petrochemical
- Operates with API Flush plan 52, 53 or 54.

OPERATING RANGE

All operating range information is dependent on media, materials of construction, and support systems used. Please contact A.R. Thomson mechanical seal services department for more information.

Pressure, Max:	290 psig (20 bar)
Temperature, Max:	750°F (400°C)
Speed, Max:	5000 fpm (25 m/s)

STANDARD MATERIALS

Metal Parts:	316SS or Hastelloy C
Seal Faces:	Antimony Impregnated Carbon Graphite, Silicon Carbide, Resin Impregnated Carbon Graphite
Elastomers:	Flexible Graphite
Bellows Material:	Hastelloy C

Limitation of liability: actual performance may vary and is determined by factors unique to a given application. It is recommended that care be taken in the selection and application of materials for hazardous services and controlled testing be undertaken to determine suitability for a specific application. A.R. Thomson Group does not make or imply any warranty of suitability for a particular purpose and is not liable for any damages arising from the use of the information in this sheet. v1.1 WWW.ARTHOMSON.COM