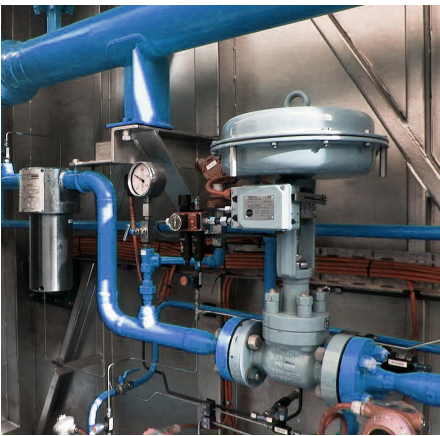


MAKING EVERY DROP COUNT

LEADERS IN RESOURCE CONSERVATION



IS ENERGY CONSUMPTION
DRAINING YOUR
PROFITS?

We all recognize the problems.

Energy waste is hurting
the bottom line.

Water Consumption is too high.

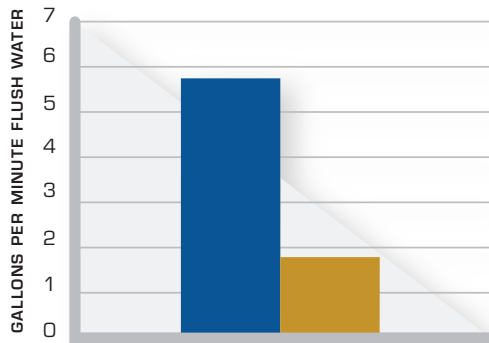
A.R. THOMSON GROUP HAS THE SOLUTIONS

PROVEN ENERGY MANAGEMENT SYSTEMS

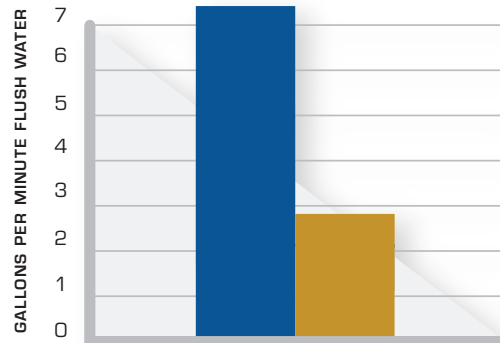
THE CONSERVATION IS DOCUMENTED,
THE SAVINGS ARE STAGGERING

SAMPLE WATER REDUCTION IN ROTATING EQUIPMENT

STRONG WHITE LIQUOR PUMP



BLACK LIQUOR PUMP



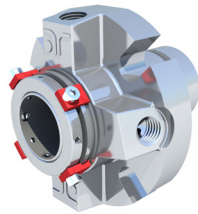
■ GPM BEFORE FLUSHGARD ■ GPM AFTER FLUSHGARD



Controlotron non-invasive flow measurement. This device accurately measures fluid flow inside of piping systems externally, without the need for in-line flow meters.

WATER CONSERVATION

We can drastically reduce flush water consumption in rotating equipment and system tramp water — by up to 70%



Mechanical Seals

And it's done in three easy steps:

STEP 1: We test and document Flush Flows in your rotating equipment.



Flow Pro Sealing System

STEP 2: Our recommended water conservation device is installed.

STEP 3: We re-test and document flush flows into the equipment. The savings are then calculated based on water costs per unit PROVIDED BY YOU.



Closed loop seal water tanks.

You tell us what it costs, and we'll tell you what you'll save!

STEAM EFFICIENCY

We will greatly improve steam efficiency
– typically by 40%

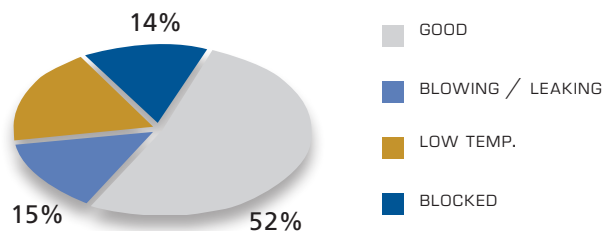
A.R.T.G. offers a complete on site steam trap management service which is affordable, accurate and documented to provide you with a complete analysis of your trap population.

Plants that do not have a proactive trap maintenance program with annual surveys often end up with 50% of the trap population in a state of failure. Steam Trap failure typically results in:

- Reduced plant efficiency.
- Delayed Start up times.
- Increased energy costs.
- Poor product quality.
- Equipment corrosion.
- Greenhouse gas emissions.



tmp plant
trap survey
FALIURE BY TYPE



Our testing equipment measures both ultrasonic and thermal conditions resulting in extremely accurate judgments that are objective and repeatable. All makes and models can be tested in less than 15 seconds.

AR Thomson Group's complete steam system audit includes:

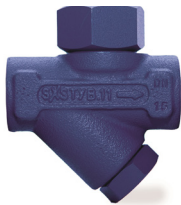
- Trap numbering System.
- Tagging of all traps.
- Database set up.
- Testing of all traps.
- Analyzing test data.
- Producing reports.
- Providing recommended replacement traps.
- Recommending piping improvements.
- Producing Technical Handbooks for installers.



AR Thomson Group has assembled a team of Technical Service Representatives with extensive experience in steam systems, rotating equipment and valve services.

AR Thomson Group proudly offers Spirax Sarco steam traps and accessories across Canada

spirax sarco



No matter your fluid control and containment needs, we can help. Contact us today!

WWW.ARTHOMSON.COM