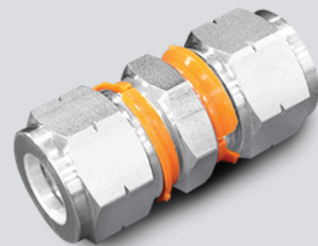
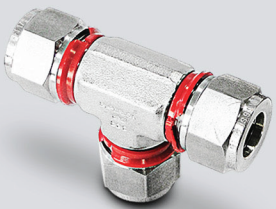
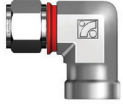



i-Fitting



INDEX

 <p>SUI Union</p>	 <p>SFEI Female Elbow</p>	 <p>SRI Reducer</p>
 <p>SRUI Reducing Union</p>	 <p>SUTI Union Tee</p>	 <p>SOSCI O-Seal Straight Thread Connector</p>
 <p>SMCI Male Connector</p>	 <p>SRUTI Reducing Union Tee</p>	 <p>SOPCI O-Seal Pipe Thread Connector</p>
 <p>SFCI Female Connector</p>	 <p>SMBTI Male Branch Tee</p>	 <p>SSMCI SAE/MS Male Connector</p>
 <p>SGCI Gauge Connector</p>	 <p>SPMBTI Positionable Male Branch Tee</p>	 <p>SPWCI Male Pipe Weld Connector</p>
 <p>SUEI Union Elbow</p>	 <p>SMRTI Male Run Tee</p>	 <p>SMPWEI Male Pipe Weld Elbow</p>
 <p>SHMEI 45° Male Elbow</p>	 <p>SFBTI Female Branch Tee</p>	 <p>SSWCI Tube Socket Weld Connector</p>
 <p>SMEI Male Elbow</p>	 <p>SFRTI Female Run Tee</p>	 <p>SSWEI Tube Socket Weld Elbow</p>
 <p>SPHMEI 45° Positionable Male Elbow</p>	 <p>SUCI Union Cross</p>	
 <p>SPMEI Positionable Male Elbow</p>	 <p>SAUI An Union</p>	

SUPERLOK'S REVOLUTIONARY NEW

i-Fitting

Creating a New Standard of Safety & Reliability

THE PROBLEM: Incorrect make-up is the #1 cause of fitting leakage.

THE SOLUTION: Superlok i-Fitting - the world's first tube fitting with an integral gap gauge ensuring correct make-up without marking or manual gap gauge check.

- ✓ Safety
- ✓ Reliability
- ✓ Consistency
- ✓ Efficiency



Challenges with Traditional Tube Fitting Connections:

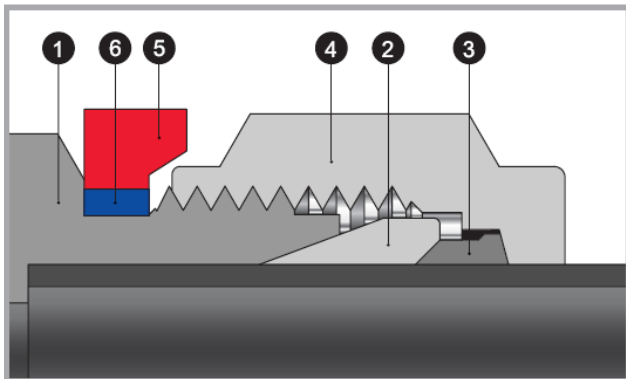
- Correct 1-1/4" turn make-up is subjective.
- Gap gauge is impractical.
- There is no way to visually ensure fitting is correctly made-up.

i-Fitting Features:

- No gap gauge required.
- No additional tools required.
- Reduced installation time.
- Prevents leakage due to incorrect make-up.

How the Superlok i-Fitting Works:

The i-Fitting consists of the interchangeable body, nut and ferrule system. The i-Fitting body has a **red gap gauge**, and a **blue inspection ring**. When the fitting is correctly made up, the red gap gauge releases from the fitting and the blue inspection ring is revealed. A blue ring means correct make up. A red ring means insufficient make-up.



No.	COMPONENT
1	BODY
2	FRONT FERRULE
3	BACK FERRULE
4	NUT
5	RED GAP GAUGE
6	BLUE INSPECTION RING

i-Fitting Installation Procedure:

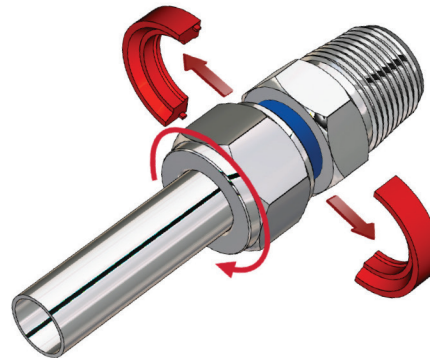
1. Assemble body, back and front ferrule, nut and tightening inspection device.



2. Fully insert tube into the fitting and against the shoulder. Rotate the nut finger-tight.



3. Rotate the nut clockwise until Red Gap Gauge disconnects from the fitting.



4. When the red gap gauge releases from the fitting, the correct make up has been achieved. To confirm all fittings are correctly made-up, visually check for blue inspection ring.

SUI Union



Connects Fractional Tubes

Part No.	Tube O.D. D (inch)	d Min	Width Across Flat		A	B	I	L
			h (inch)	H (inch)				
SUI - 4	1/4	4.82	1/2	9/16	15.24	17.78	26.16	40.89
SUI - 6	3/8	7.11	5/8	11/16	16.76	19.30	30.22	44.95
SUI - 8	1/2	10.41	13/16	7/8	22.86	21.84	30.98	51.30
SUI - 12	3/4	15.74	1-1/16	1-1/8	24.38	21.84	33.27	53.59
SUI - 16	1	22.35	1-3/8	1-1/2	31.24	26.41	40.38	64.77

Connects Metric Tubes

Part No.	Tube O.D. D	d Min	Width Across Flat		A	B	I	L
			h	H				
SUI - 6M	6	4.8	14	14	15.3	17.7	26.2	41.0
SUI - 8M	8	6.4	15	16	16.2	18.6	28.2	43.2
SUI - 10M	10	7.9	18	19	17.2	19.5	31.0	46.2
SUI - 12M	12	9.5	22	22	22.8	22.0	31.0	51.2
SUI - 16M	16	12.7	24	25	24.4	22.0	31.8	52.0
SUI - 18M	18	15.1	27	30	24.4	22.0	33.3	53.5
SUI - 20M	20	15.9	30	32	26.0	22.0	34.8	55.0
SUI - 25M	25	21.8	35	38	31.3	26.5	40.4	65.0

• All dimensions in millimeters unless specified as "inch". Dimension are for reference only, subject to change
 • Any size not in the list is available upon request.

SRUI

Reducing Union



Connects Fractional Tubes

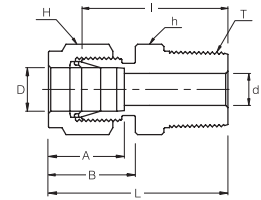
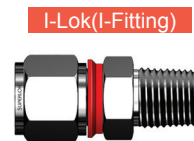
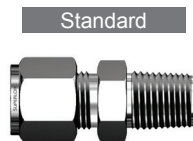
Part No.	Tube O.D.		d Min	Width Across Flat			A	A ₁	B	B ₁	I	L
	D (inch)	D ₁ (inch)		h (inch)	H (inch)	H ₁ (inch)						
SRUI - 6 - 4	3/8	1/4	4.82	5/8	11/16	9/16	16.76	15.24	19.30	17.78	28.44	43.18
SRUI - 8 - 4	1/2	1/4	4.82	13/16	7/8	9/16	22.86	15.24	21.84	17.78	29.46	46.99
SRUI - 8 - 6	1/2	3/8	7.11	13/16	7/8	11/16	22.86	16.76	21.84	19.30	30.98	48.51
SRUI - 12 - 4	3/4	1/4	4.82	1-1/16	1-1/8	9/16	24.38	15.24	21.84	17.78	31.75	49.27
SRUI - 12 - 6	3/4	3/8	7.11	1-1/16	1-1/8	11/16	24.38	16.76	21.84	19.30	33.27	50.80
SRUI - 12 - 8	3/4	1/2	10.41	1-1/16	1-1/8	7/8	24.38	22.86	21.84	21.84	33.27	53.59
SRUI - 16 - 8	1	1/2	10.41	1-3/8	1-1/2	7/8	31.24	22.86	26.41	21.84	39.50	63.24
SRUI - 16 - 12	1	3/4	15.74	1-3/8	1-1/2	1-1/8	31.24	24.38	26.41	21.84	39.00	62.73

Connects Metric Tubes

Part No.	Tube O.D.		d Min	Width Across Flat			A	A ₁	B	B ₁	I	L
	D	D ₁		h	H	H ₁						
SRUI - 8M - 6M	8	6	4.8	15	16	14	16.2	15.3	18.6	17.7	27.4	42.3
SRUI - 10M - 6M	10	6	4.8	18	19	14	17.2	15.3	19.5	17.7	29.5	44.5
SRUI - 10M - 8M	10	8	6.4	18	19	16	17.2	16.2	19.5	18.6	30.0	45.1
SRUI - 12M - 6M	12	6	4.8	22	22	14	22.8	15.3	22.0	17.7	29.5	47.0
SRUI - 12M - 8M	12	8	6.4	22	22	16	22.8	16.2	22.0	18.6	30.2	47.8
SRUI - 12M - 10M	12	10	7.9	22	22	19	22.8	17.2	22.0	19.5	31.0	48.7
SRUI - 16M - 12M	16	12	9.5	24	25	22	24.4	22.8	22.0	22.0	31.8	52.0
SRUI - 25M - 18M	25	18	15.1	35	38	30	31.3	24.4	26.5	22.0	38.6	61.0
SRUI - 25M - 20M	25	20	15.9	35	38	32	31.3	26.0	26.5	22.0	39.9	62.3

• All dimensions in millimeters unless specified as "inch". Dimension are for reference only, subject to change
 • Any size not in the list is available upon request.

SMCI Male Connector



Connects Fractional Tube To Female NPT Thread

Part No.	Tube O.D. D (inch)	T (NPT)	d Min	Width Across Flat		A	B	I	L
				h (inch)	H (inch)				
SMCI - 4 - 6N	1/4	3/8	4.82	11/16	9/16	15.24	17.78	30.98	38.35
SMCI - 4 - 8N	1/4	1/2	4.82	7/8	9/16	15.24	17.78	37.33	44.70
SMCI - 6 - 4N	3/8	1/4	7.11	5/8	11/16	16.76	19.30	32.51	39.87
SMCI - 6 - 6N	3/8	3/8	7.11	11/16	11/16	16.76	19.30	32.51	39.87
SMCI - 6 - 8N	3/8	1/2	7.11	7/8	11/16	16.76	19.30	38.86	46.22
SMCI - 8 - 4N	1/2	1/4	7.11	13/16	7/8	22.86	21.84	33.27	43.43
SMCI - 8 - 6N	1/2	3/8	9.65	13/16	7/8	22.86	21.84	33.27	43.43
SMCI - 8 - 8N	1/2	1/2	10.41	7/8	7/8	22.86	21.84	38.86	49.02
SMCI - 8 - 12N	1/2	3/4	10.41	1-1/16	7/8	22.86	21.84	40.38	50.54
SMCI - 12 - 12N	3/4	3/4	15.74	1-1/16	1-1/8	24.38	21.84	40.38	50.54
SMCI - 16 - 16N	1	1	22.35	1-3/8	1-1/2	31.24	26.41	50.03	62.23

Connects Metric Tube To Female ISO Tapered Thread

Part No.	Tube O.D. D	T (PT)	d Min	Width Across Flat		A	B	I	L
				h	H				
SMCI - 6M - 2R	6	1/8	4.8	14	14	15.3	17.7	25.4	32.8
SMCI - 6M - 4R	6	1/4	4.8	14	14	15.3	17.7	30.5	37.9
SMCI - 6M - 6R	6	3/8	4.8	18	14	15.3	17.7	31.0	38.4
SMCI - 8M - 4R	8	1/4	6.4	15	16	16.2	18.6	31.2	38.7
SMCI - 8M - 6R	8	3/8	6.4	18	16	16.2	18.6	31.8	39.3
SMCI - 8M - 8R	8	1/2	6.4	22	16	16.2	18.6	38.1	45.6
SMCI - 10M - 6R	10	3/8	7.9	18	19	17.2	19.5	33.3	40.9
SMCI - 10M - 8R	10	1/2	7.9	22	19	17.2	19.5	38.9	46.5
SMCI - 12M - 8R	12	1/2	9.5	22	22	22.8	22.0	38.9	49.0
SMCI - 12M - 12R	12	3/4	9.5	27	22	22.8	22.0	40.4	50.5
SMCI - 16M - 8R	16	1/2	11.9	24	25	24.4	22.0	38.9	49.0
SMCI - 16M - 12R	16	3/4	12.7	27	25	24.4	22.0	40.4	50.5
SMCI - 18M - 8R	18	1/2	11.9	27	30	24.4	22.0	40.4	50.5
SMCI - 18M - 12R	18	3/4	15.1	27	30	24.4	22.0	40.4	50.5
SMCI - 20M - 8R	20	1/2	11.9	30	32	26.0	22.0	42.2	52.3
SMCI - 20M - 12R	20	3/4	15.9	30	32	26.0	22.0	42.2	52.3
SMCI - 25M - 12R	25	3/4	15.9	35	38	31.3	26.5	45.2	57.5
SMCI - 25M - 16R	25	1	21.8	35	38	31.3	26.5	50.0	62.3

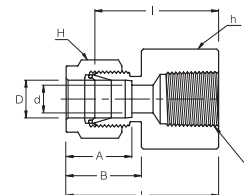
• All dimensions in millimeters unless specified as "inch". Dimension are for reference only, subject to change
 • Any size not in the list is available upon request.

SFCI Female Connector

Standard



I-Lok(I-Fitting)



Connects Fractional Tubes To Male NPT Thread

Part No.	Tube O.D. D (inch)	T (NPT)	d Min	Width Across Flat		A	B	I	L
				h (inch)	H (inch)				
SFCI - 4 - 2N	1/4	1/8	4.82	9/16	9/16	15.24	17.78	23.87	31.24
SFCI - 4 - 4N	1/4	1/4	4.82	3/4	9/16	15.24	17.78	28.44	35.81
SFCI - 4 - 6N	1/4	3/8	4.82	7/8	9/16	15.24	17.78	30.22	37.59
SFCI - 4 - 8N	1/4	1/2	4.82	1-1/16	9/16	15.24	17.78	35.05	42.41
SFCI - 6 - 2N	3/8	1/8	7.11	5/8	11/16	16.76	19.30	25.40	32.76
SFCI - 6 - 4N	3/8	1/4	7.11	3/4	11/16	16.76	19.30	30.22	37.59
SFCI - 6 - 6N	3/8	3/8	7.11	7/8	11/16	16.76	19.30	31.75	39.11
SFCI - 6 - 8N	3/8	1/2	7.11	1-1/16	11/16	16.76	19.30	36.57	43.94
SFCI - 6 - 12N	3/8	3/4	7.11	1-5/16	11/16	16.76	19.30	40.38	47.75
SFCI - 8 - 4N	1/2	1/4	10.41	13/16	7/8	22.86	21.84	30.22	40.38
SFCI - 8 - 6N	1/2	3/8	10.41	7/8	7/8	22.86	21.84	31.75	41.91
SFCI - 8 - 8N	1/2	1/2	10.41	1-1/16	7/8	22.86	21.84	36.57	46.73
SFCI - 8 - 12N	1/2	3/4	10.41	1-5/16	7/8	22.86	21.84	38.10	48.26
SFCI - 12 - 8N	3/4	1/2	15.74	1-1/16	1-1/8	24.38	21.84	36.57	46.73
SFCI - 12 - 12N	3/4	3/4	15.74	1-5/16	1-1/8	24.38	21.84	38.10	48.26
SFCI - 16 - 12N	1	3/4	22.35	1-3/8	1-1/2	31.24	26.41	41.14	53.34
SFCI - 16 - 16N	1	1	22.35	1-5/8	1-1/2	31.24	26.41	50.03	62.23

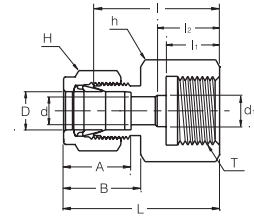
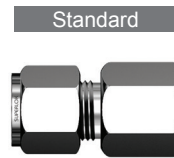
Connects Metric Tubes To Male ISO Thread Thread

Part No.	Tube O.D. D	T (PT)	d Min	Width Across Flat		A	B	I	L
				h	H				
SFCI - 6M - 2R	6	1/8	4.8	14	14	15.3	17.7	23.9	31.3
SFCI - 6M - 4R	6	1/4	4.8	19	14	15.3	17.7	28.4	35.8
SFCI - 6M - 6R	6	3/8	4.8	22	14	15.3	17.7	30.2	37.6
SFCI - 8M - 4R	8	1/4	6.4	19	16	16.2	18.6	29.5	37.0
SFCI - 8M - 6R	8	3/8	6.4	22	16	16.2	18.6	31.0	38.5
SFCI - 8M - 8R	8	1/2	6.4	27	16	16.2	18.6	35.8	43.3
SFCI - 10M - 6R	10	3/8	7.9	22	19	17.2	19.5	31.8	39.4
SFCI - 10M - 8R	10	1/2	7.9	27	19	17.2	19.5	36.6	44.2
SFCI - 12M - 8R	12	1/2	9.5	27	22	22.8	22.0	36.6	46.7
SFCI - 12M - 12R	12	3/4	9.5	35	22	22.8	22.0	38.9	49.0
SFCI - 16M - 8R	16	1/2	12.7	27	25	24.4	22.0	36.8	46.9
SFCI - 20M - 12R	20	3/4	15.9	35	32	26.0	22.0	39.6	49.7
SFCI - 25M - 12R	25	3/4	21.8	35	38	31.3	26.5	41.1	53.4
SFCI - 25M - 16R	25	1	21.8	41	38	31.3	26.5	50.0	62.3

• All dimensions in millimeters unless specified as "inch". Dimension are for reference only, subject to change
 • Any size not in the list is available upon request.

SGCI

Gauge Connector



Connects Fractional Tubes To ISO Parallel Thread

Part No.	Tube O.D. D (inch)	T (PF)	d Min	d ₁	Width Across Flat		A	B	I	I ₁	I ₂	L
					h (inch)	H (inch)						
SGCI - 4 - 4G	1/4	1/4	4.82	5.58	3/4	9/16	15.24	17.78	30.22	13.00	17.00	37.59
SGCI - 4 - 6G	1/4	3/8	4.82	6.60	15/16	9/16	15.24	17.78	30.22	14.20	20.30	37.59
SGCI - 4 - 8G	1/4	1/2	4.82	6.60	1-1/16	9/16	15.24	17.78	36.07	18.80	24.90	43.43
SGCI - 6 - 4G	3/8	1/4	5.58	-	3/4	11/16	16.76	19.30	31.75	13.00	-	39.12
SGCI - 6 - 6G	3/8	3/8	6.60	-	15/16	11/16	16.76	19.30	31.24	14.20	-	38.61
SGCI - 6 - 8G	3/8	1/2	7.11	-	1-1/16	11/16	16.76	19.30	34.54	18.80	-	41.91
SGCI - 8 - 4G	1/2	1/4	5.58	-	7/8	7/8	22.86	21.84	31.80	13.00	-	41.95
SGCI - 8 - 6G	1/2	3/8	6.60	-	15/16	7/8	22.86	21.84	34.29	14.20	-	44.45
SGCI - 8 - 8G	1/2	1/2	7.11	7.11	1-1/16	7/8	22.86	21.84	38.10	18.80	-	48.26

Connects Metric Tubes To ISO Parallel Thread

Part No.	Tube O.D. D	T (PF)	d Min	d ₁	Width Across Flat		A	B	I	I ₁	I ₂	L
					h	H						
SGCI - 6M - 4G	6	1/4	4.8	5.5	19	14	15.3	17.7	30.2	13	17	37.6
SGCI - 6M - 6G	6	3/8	4.8	6.5	24	14	15.3	17.7	30.2	14	20	37.6
SGCI - 6M - 8G	6	1/2	4.8	7.0	27	14	15.3	17.7	36.1	19	25	43.5
SGCI - 8M - 4G	8	1/4	5.5	5.5	19	16	16.2	18.6	31.0	13	-	38.5
SGCI - 8M - 6G	8	3/8	6.5	6.5	24	16	16.2	18.6	28.7	14	-	36.2
SGCI - 8M - 8G	8	1/2	7.0	7.0	27	16	16.2	18.6	33.5	19	-	41.0
SGCI - 10M - 4G	10	1/4	5.5	5.5	19	19	17.2	19.5	31.8	13	-	39.4
SGCI - 10M - 6G	10	3/8	6.5	6.5	24	19	17.2	19.5	31.2	14	-	38.8
SGCI - 10M - 8G	10	1/2	7.0	7.0	27	19	17.2	19.5	34.5	19	-	42.1
SGCI - 12M - 4G	12	1/4	5.5	5.5	22	22	22.8	22.0	31.8	13	-	41.9
SGCI - 12M - 6G	12	3/8	6.5	6.5	24	22	22.8	22.0	34.3	14	-	44.4
SGCI - 12M - 8G	12	1/2	7.0	7.0	27	22	22.8	22.0	38.1	19	-	48.2
SGCI - 20M - 8G	20	1/2	7.0	7.0	30	32	26.0	22.0	44.2	19	-	54.3

• All dimensions in millimeters unless specified as "inch". Dimension are for reference only, subject to change
 • Any size not in the list is available upon request.

SUEI Union Elbow



Connects Fractional Tubes

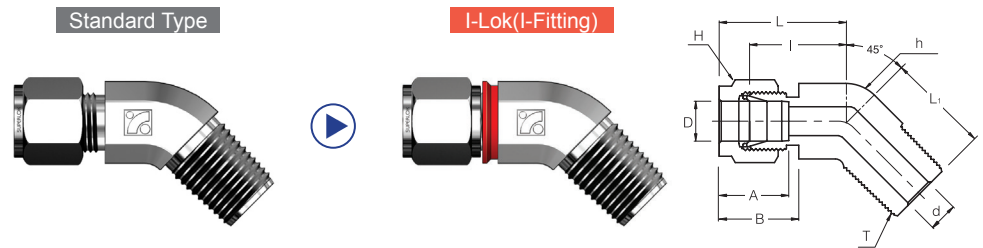
Part No.	Tube O.D. D (inch)	d Min	Width Across Flat		A	B	I	L
			h (inch)	H (inch)				
SUEI - 4	1/4	4.82	1/2	9/16	15.24	17.78	20.10	27.40
SUEI - 6	3/8	7.11	5/8	11/16	16.76	19.30	23.11	30.48
SUEI - 8	1/2	10.41	13/16	7/8	22.86	21.84	25.90	36.06
SUEI - 12	3/4	15.74	1-1/16	1-1/8	24.38	21.84	29.71	39.87
SUEI - 16	1	22.35	1-3/8	1-1/2	31.24	26.41	36.83	49.02

Connects Metric Tubes

Part No.	Tube O.D. D	d Min	Width Across Flat		A	B	I	L
			h	H				
SUEI - 6M	6	4.8	12.7	14	15.3	17.7	19.6	27.0
SUEI - 8M	8	6.4	15.9	16	16.2	18.6	22.4	29.9
SUEI - 10M	10	7.9	17.5	19	17.2	19.5	23.9	31.5
SUEI - 12M	12	9.5	20.6	22	22.8	22.0	25.9	36.0
SUEI - 16M	16	12.7	23.8	25	24.4	22.0	27.9	38.0
SUEI - 18M	18	15.1	27.0	30	24.4	22.0	29.7	39.8
SUEI - 20M	20	15.9	34.9	32	26.0	22.0	34.5	44.6
SUEI - 25M	25	21.8	34.9	38	31.3	26.5	36.8	49.1

SHMEI

45° Male Elbow



Connects Fractional Tubes To Female NPT Thread

Part No.	Tube O.D. D (inch)	T (NPT)	d Min	Width Across Flat		A	B	I	L	L ₁
				h (inch)	H (inch)					
SHMEI - 4 - 2N	1/4	1/8	4.82	1/2	9/16	15.24	17.78	17.27	24.63	16.51
SHMEI - 4 - 4N	1/4	1/4	4.82	1/2	9/16	15.24	17.78	17.27	24.63	21.08
SHMEI - 6 - 2N	3/8	1/8	4.82	5/8	11/16	16.76	19.30	20.57	27.94	18.28
SHMEI - 6 - 4N	3/8	1/4	7.11	5/8	11/16	16.76	19.30	20.57	27.94	22.86
SHMEI - 6 - 6N	3/8	3/8	7.11	13/16	11/16	16.76	19.30	21.84	29.21	24.13
SHMEI - 8 - 6N	1/2	3/8	9.65	13/16	7/8	22.86	21.84	21.84	32.00	24.13
SHMEI - 8 - 8N	1/2	1/2	10.41	13/16	7/8	22.86	21.84	21.84	32.00	28.95

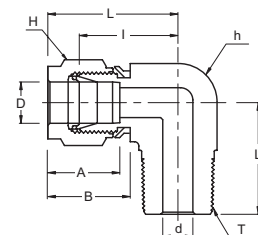
Connects Metric Tubes To Female ISO Tapered Thread

Part No.	Tube O.D. D	T (PT)	d Min	Width Across Flat		A	B	I	L	L ₁
				h	H					
SHMEI - 6M - 2R	6	1/8	4.8	12.7	14	15.3	17.7	17.3	24.6	16.5
SHMEI - 6M - 4R	6	1/4	4.8	12.7	14	15.3	17.7	17.3	24.6	21.1
SHMEI - 12M - 6R	12	3/8	9.5	20.6	22	22.8	21.8	21.8	32.0	24.1
SHMEI - 12M - 8R	12	1/2	9.5	20.6	22	22.8	21.8	21.8	32.0	29.0

• All dimensions in millimeters unless specified as "inch". Dimension are for reference only, subject to change
 • Any size not in the list is available upon request.

SMEI

Male Elbow



Connects Fractional Tube To Female NPT Thread

Part No.	Tube O.D. D (inch)	T (NPT)	d Min	Width Across Flat		A	B	I	L	L ₁
				h (inch)	H (inch)					
SMEI - 4 - 2N	1/4	1/8	4.82	1/2	9/16	15.24	17.78	19.55	26.92	18.79
SMEI - 4 - 4N	1/4	1/4	4.82	1/2	9/16	15.24	17.78	19.55	26.92	23.36
SMEI - 4 - 6N	1/4	3/8	4.82	5/8	9/16	15.24	17.78	22.35	29.71	26.16
SMEI - 4 - 8N	1/4	1/2	4.82	13/16	9/16	15.24	17.78	24.38	31.75	33.02
SMEI - 6 - 2N	3/8	1/8	4.82	5/8	11/16	16.76	19.30	23.11	30.48	20.82
SMEI - 6 - 4N	3/8	1/4	7.11	5/8	11/16	16.76	19.30	23.11	30.48	25.40
SMEI - 6 - 6N	3/8	3/8	7.11	5/8	11/16	16.76	19.30	23.87	31.24	26.16
SMEI - 6 - 8N	3/8	1/2	7.11	13/16	11/16	16.76	19.30	25.90	33.27	33.02
SMEI - 6 - 12N	3/8	3/4	7.11	1-1/16	11/16	16.76	19.30	29.71	37.08	36.83
SMEI - 8 - 4N	1/2	1/4	7.11	13/16	7/8	22.86	21.84	25.90	36.06	28.19
SMEI - 8 - 6N	1/2	3/8	9.65	13/16	7/8	22.86	21.84	25.90	36.06	28.19
SMEI - 8 - 8N	1/2	1/2	10.41	13/16	7/8	22.86	21.84	25.90	36.06	33.02
SMEI - 8 - 12N	1/2	3/4	10.41	1-1/16	7/8	22.86	21.84	29.71	39.87	36.83
SMEI - 12 - 8N	3/4	1/2	11.93	1-1/16	1-1/8	24.38	21.84	29.71	39.87	36.83
SMEI - 12 - 12N	3/4	3/4	15.74	1-1/16	1-1/8	24.38	21.84	29.71	39.87	36.83
SMEI - 16 - 12N	1	3/4	15.74	1-3/8	1-1/2	31.24	26.41	36.83	49.02	41.65
SMEI - 16 - 16N	1	1	22.35	1-3/8	1-1/2	31.24	26.41	36.83	49.02	46.48

Connects Metric Tubes To Female ISO Tapered Thread

Part No.	Tube O.D. D	T (PT)	d Min	Width Across Flat		A	B	I	L	L ₁
				h	H					
SMEI - 6M - 2R	6	1/8	4.8	12.7	14	15.3	17.7	19.6	27.0	18.8
SMEI - 6M - 4R	6	1/4	4.8	12.7	14	15.3	17.7	19.6	27.0	23.4
SMEI - 6M - 6R	6	3/8	4.8	15.9	14	15.3	17.7	22.4	29.8	26.2
SMEI - 8M - 4R	8	1/4	6.4	14.3	16	16.2	18.6	21.3	28.8	24.4
SMEI - 8M - 6R	8	3/8	6.4	15.9	16	16.2	18.6	23.1	30.6	26.2
SMEI - 8M - 8R	8	1/2	6.4	20.6	16	16.2	18.6	25.1	32.6	33.0
SMEI - 10M - 6R	10	3/8	7.9	17.5	19	17.2	19.5	23.9	31.5	26.2
SMEI - 10M - 8R	10	1/2	7.9	20.6	19	17.2	19.5	25.9	33.5	33.0
SMEI - 12M - 8R	12	1/2	9.5	20.6	22	22.8	22.0	25.9	36.0	33.0
SMEI - 12M - 12R	12	3/4	9.5	27.0	22	22.8	22.0	29.7	39.8	36.8
SMEI - 16M - 8R	16	1/2	11.9	23.8	25	24.4	22.0	27.9	38.0	35.1
SMEI - 18M - 8R	18	1/2	11.9	27.0	30	24.4	22.0	29.7	39.8	36.8
SMEI - 18M - 12R	18	3/4	15.1	27.0	30	24.4	22.0	29.7	39.8	36.8
SMEI - 20M - 8R	20	1/2	11.9	34.9	32	26.0	22.0	34.5	44.6	41.7
SMEI - 20M - 12R	20	3/4	15.9	34.9	32	26.0	22.0	34.5	44.6	41.7
SMEI - 25M - 12R	25	3/4	15.9	34.9	38	31.3	26.5	36.8	49.1	41.7
SMEI - 25M - 16R	25	1	21.8	34.9	38	31.3	26.5	36.8	49.1	46.5

• All dimensions in millimeters unless specified as "inch". Dimension are for reference only, subject to change
 • Any size not in the list is available upon request.

SPHMEI

45° Positionable
Male Elbow



Connects Fractional Tubes To SAE/MS Straight Thread

Part No.	Tube O.D. D (inch)	Straight Thread T(U)	d Min	Width Across Flat			A	B	I	L	L1	C
				h1 (inch)	h2 (inch)	H (inch)						
SPHMEI - 4 - 4U	1/4	7/16-20	4.83	1/2	9/16	9/16	15.24	17.78	18.29	25.64	25.65	16.51
SPHMEI - 6 - 6U	3/8	9/16-18	7.11	5/8	11/16	11/16	16.76	19.30	20.57	27.94	28.19	20.07
SPHMEI - 8 - 8U	1/2	3/4-16	10.41	13/16	7/8	7/8	22.86	21.84	21.84	32.00	32.26	25.65
SPHMEI - 12 - 12U	3/4	1-1/16-12	15.75	1-1/8	1-1/4	1-1/8	24.38	24.84	29.72	39.88	47.24	36.58
SPHMEI - 16 - 16U	1	1-5/16-12	22.35	1-3/8	1-1/2	1-1/2	31.24	26.42	35.31	47.50	50.55	43.94

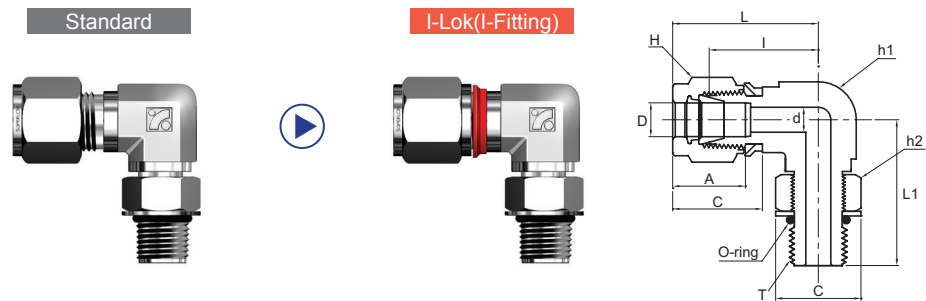
Connects Metric Tubes To SAE/MS Straight Thread

Part No.	Tube O.D. D	Straight Thread T(U)	d Min	Width Across Flat			A	B	I	L	L1	C
				h1	h2	H						
SPHMEI - 6M - 4U	6	7/16-20	4.8	12.7	14.3	14	15.2	17.7	18.3	25.6	25.6	16.5
SPHMEI - 12M - 8U	12	3/4-16	9.5	20.6	22.2	22	22.8	21.8	21.8	32.0	32.2	25.6
SPHMEI - 18M - 12U	18	1-1/16-12	15.1	28.6	31.7	30	24.3	24.8	29.7	39.8	47.2	36.6
SPHMEI - 25M - 16U	25	1-5/16-12	21.8	34.9	38.1	38	31.2	26.4	35.3	47.5	50.5	43.9

• All dimensions in millimeters unless specified as "inch". Dimension are for reference only, subject to change
 • Any size not in the list is available upon request.

SPMEI

Positionable
Male Elbow



Connects Fractional Tubes To SAE/MS Straight Thread

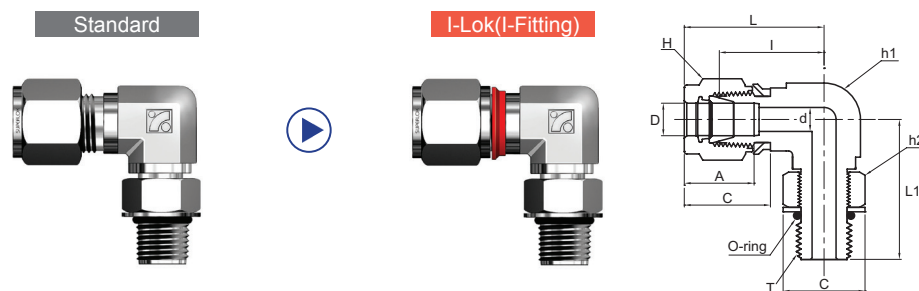
Part No.	Tube O.D. D (Inch)	Straight Thread T(U)	d Min	Width Across Flat			A	B	I	L	L1	C
				h1 (inch)	h2 (inch)	H (inch)						
SPMEI - 4 - 4U	1/4	7/16-20	4.83	1/2	9/16	9/16	15.24	17.78	21.08	28.45	28.45	16.51
SPMEI - 4 - 6U	1/4	9/16-18	4.83	5/8	11/16	9/16	15.24	17.78	23.11	30.48	32.26	20.07
SPMEI - 6 - 6U	3/8	9/16-18	7.11	5/8	11/16	11/16	16.76	19.30	24.64	32.00	32.26	20.07
SPMEI - 6 - 8U	3/8	3/4-16	7.11	13/16	7/8	11/16	16.76	19.30	27.43	34.80	37.85	25.65
SPMEI - 8 - 8U	1/2	3/4-16	10.41	13/16	7/8	7/8	22.86	21.84	27.43	37.59	37.85	25.65
SPMEI - 12 - 12U	3/4	1-1/16-12	15.75	1-1/16	1-1/4	1-1/8	24.38	24.84	31.24	41.40	48.77	36.58
SPMEI - 16 - 16U	1	1-5/16-12	22.35	1-3/8	1-1/2	1-1/2	31.24	26.42	38.35	50.55	53.59	43.94

Connects Metric Tubes To SAE/MS Straight Thread

Part No.	Tube O.D. D	Straight Thread T(U)	d Min	Width Across Flat			A	B	I	L	L1	C
				h1	h2	H						
SPMEI - 6M - 4U	6	7/16-20	4.8	12.7	14.3	14	15.2	17.7	21.1	28.4	28.6	16.5
SPMEI - 12M - 8U	12	3/4-16	9.5	20.6	22.2	22	22.8	21.8	27.4	37.5	37.6	25.6
SPMEI - 18M - 12U	18	1-1/16-12	15.1	27	31.7	30	24.3	24.8	31.2	41.4	48.8	36.5
SPMEI - 25M - 16U	25	1-5/16-12	21.8	34.9	38.1	38	31.2	26.4	38.4	50.5	53.6	43.9

SPMEI

Positionable Male Elbow



Connects Fractional Tubes To Female ISO Parallel Thread

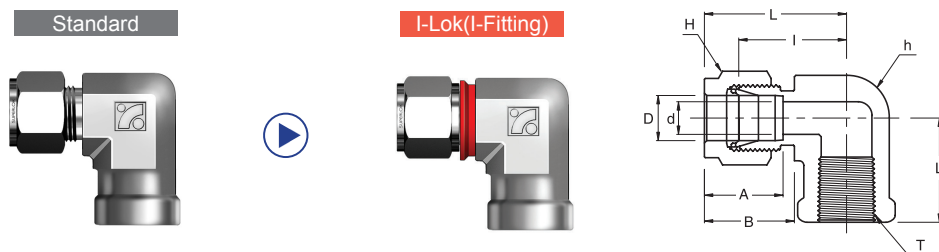
Part No.	Tube O.D. D (inch)	T (PF)	d Min	Width Across Flat			A	B	I	L	L1	C
				h1 (inch)	h2 (inch)	H (inch)						
SPMEI - 4 - 2G	1/4	1/8	4.06	1/2	9/16	9/16	15.24	17.78	19.56	26.92	26.42	17.27
SPMEI - 4 - 4G	1/4	1/4	4.83	5/8	3/4	9/16	15.24	17.78	21.59	28.96	32.26	22.86
SPMEI - 6 - 4G	3/8	1/4	5.84	5/8	3/4	11/16	16.76	19.30	23.11	30.48	32.26	22.86
SPMEI - 6 - 6G	3/8	3/8	7.11	13/16	7/8	11/16	16.76	19.30	25.91	33.27	37.08	26.42
SPMEI - 8 - 4G	3/8	1/4	5.84	13/16	3/4	7/8	22.86	21.84	25.91	36.07	35.05	26.42
SPMEI - 8 - 6G	1/2	3/8	7.87	13/16	7/8	7/8	22.86	21.84	25.91	36.07	37.08	22.86
SPMEI - 8 - 8G	1/2	1/2	10.41	15/16	1-1/16	7/8	22.86	21.84	27.94	38.10	43.43	26.42
SPMEI - 12 - 8G	3/4	1/2	11.94	1-1/16	1-1/16	1-1/8	24.38	21.84	29.72	39.88	45.21	32.00
SPMEI - 12 - 12G	3/4	3/4	15.75	1-1/16	1-3/8	1-1/8	24.38	21.84	29.72	39.88	48.77	41.15
SPMEI - 16 - 12G	1	3/4	15.75	1-3/8	1-3/8	1-1/2	31.24	26.42	36.83	49.02	53.34	41.15
SPMEI - 16 - 16G	1	1	19.81	1-3/8	1-5/8	1-1/2	31.24	26.42	36.83	49.02	53.59	48.51

Connects Metric Tubes To Female ISO Parallel Thread

Part No.	Tube O.D. D	T (PF)	d Min	Width Across Flat			A	B	I	L	L1	C
				h1	h2	H						
SPMEI - 6M - 2G	6	1/8	4.0	12.7	14.3	14	15.3	17.7	19.6	27.0	26.4	17.3
SPMEI - 6M - 4G	6	1/4	4.8	22.2	19	14	15.3	17.7	21.6	29.0	32.3	22.9
SPMEI - 8M - 2G	8	1/8	4.0	14.3	14.3	16	16.2	18.6	21.3	28.8	27.4	17.3
SPMEI - 8M - 4G	8	1/4	5.9	22.2	19	16	16.2	18.6	22.4	29.9	32.2	22.9
SPMEI - 10M - 4G	10	1/4	5.9	20.6	19	19	17.2	19.5	25.9	33.5	35.0	22.9
SPMEI - 10M - 6G	10	3/8	7.9	20.6	22.2	19	17.2	19.5	25.9	33.5	37.1	26.4
SPMEI - 12M - 4G	12	1/4	5.9	20.6	19	22	22.8	22.0	25.9	36.0	35.0	22.9
SPMEI - 12M - 8G	12	1/2	9.5	23.8	27	22	22.8	22.0	27.9	38.0	43.4	32.0
SPMEI - 12M - 12G	12	3/4	9.5	27	34.9	22	22.8	22.0	29.7	39.8	48.8	41.1

SFEI

Female Elbow



Connects Fractional Tubes To Male NPT Thread

Part No.	Tube O.D. D (inch)	T (NPT)	d Min	Width Across Flat		A	B	I	L	L ₁
				h (inch)	H (inch)					
SFEI - 4 - 2N	1/4	1/8	4.82	1/2	9/16	15.24	17.78	19.55	26.92	19.05
SFEI - 4 - 4N	1/4	1/4	4.82	11/16	9/16	15.24	17.78	22.35	29.71	22.35
SFEI - 4 - 6N	1/4	3/8	4.82	13/16	9/16	15.24	17.78	24.38	31.75	22.35
SFEI - 4 - 8N	1/4	1/2	4.82	1	9/16	15.24	17.78	27.17	34.54	28.44
SFEI - 6 - 2N	3/8	1/8	7.11	5/8	11/16	16.76	19.30	23.11	30.48	19.05
SFEI - 6 - 4N	3/8	1/4	7.11	11/16	11/16	16.76	19.30	23.87	31.24	22.35
SFEI - 6 - 6N	3/8	3/8	7.11	13/16	11/16	16.76	19.30	25.90	33.27	22.35
SFEI - 6 - 8N	3/8	1/2	7.11	1	11/16	16.76	19.30	28.70	36.06	28.44
SFEI - 8 - 4N	1/2	1/4	10.41	13/16	7/8	22.86	21.84	25.90	36.06	22.35
SFEI - 8 - 6N	1/2	3/8	10.41	13/16	7/8	22.86	21.84	25.90	36.06	22.35
SFEI - 8 - 8N	1/2	1/2	10.41	1	7/8	22.86	21.84	28.70	38.86	37.00
SFEI - 12 - 8N	3/4	1/2	15.74	1-1/16	1-1/8	24.38	21.84	29.71	39.87	28.44
SFEI - 12 - 12N	3/4	3/4	15.74	1-3/8	1-1/8	24.38	21.84	34.54	44.70	31.75
SFEI - 16 - 12N	1	3/4	22.35	1-3/8	1-1/2	31.24	26.41	36.83	49.02	31.75
SFEI - 16 - 16N	1	1	22.35	1-11/16	1-1/2	31.24	26.41	41.40	53.59	38.10

Connects Metric Tubes To Male ISO Tapered Thread

Part No.	Tube O.D. D	T (PT)	d Min	Width Across Flat		A	B	I	L	L ₁
				h	H					
SFEI - 6M - 4R	6	1/4	4.8	17.4	14	15.3	17.7	22.4	29.8	22.40
SFEI - 6M - 6R	6	3/8	4.8	20.6	14	15.3	17.7	24.4	31.7	22.40
SFEI - 6M - 8R	6	1/2	4.8	25.4	14	15.3	17.7	27.2	34.6	28.40
SFEI - 8M - 4R	8	1/4	6.4	17.4	16	16.2	18.6	23.1	30.6	22.40
SFEI - 8M - 8R	8	1/2	6.4	25.4	16	16.2	18.6	28.0	35.2	28.40
SFEI - 10M - 4R	10	1/4	7.9	17.4	19	17.2	19.5	25.9	33.5	22.40
SFEI - 10M - 6R	10	3/8	7.9	20.6	19	17.2	19.5	25.9	33.5	22.40
SFEI - 12M - 6R	12	3/8	9.5	20.6	22	22.8	22.0	25.9	36.2	22.35
SFEI - 12M - 8R	12	1/2	9.5	25.4	22	22.8	22.0	28.7	38.8	28.40

SUTI

Union Tee



Connects Fractional Tubes

Part No.	Tube O.D. D (inch)	d Min	Width Across Flat		A	B	I	L
			h (inch)	H (inch)				
SUTI - 4	1/4	4.82	1/2	9/16	15.24	17.78	20.10	27.40
SUTI - 6	3/8	7.11	5/8	11/16	16.76	19.30	23.11	30.48
SUTI - 8	1/2	10.41	13/16	7/8	22.86	21.84	25.90	36.06
SUTI - 12	3/4	15.74	1-1/16	1-1/8	24.38	21.84	29.71	39.87
SUTI - 16	1	22.35	1-3/8	1-1/2	31.24	26.41	36.83	49.02

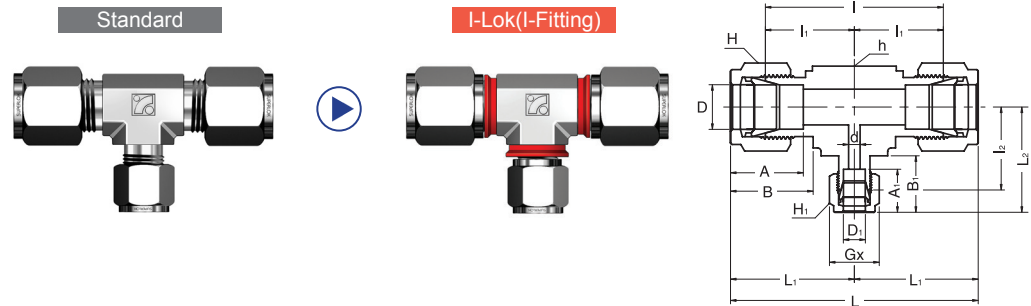
Connects Metric Tubes

Part No.	Tube O.D. D	d Min	Width Across Flat		A	B	I	L
			h	H				
SUTI - 6M	6	4.8	12.7	14	15.3	17.7	19.6	27.0
SUTI - 8M	8	6.4	15.9	16	16.2	18.6	22.4	29.9
SUTI - 10M	10	7.9	17.5	19	17.2	19.5	23.9	31.5
SUTI - 12M	12	9.5	20.6	22	22.8	22.0	25.9	36.0
SUTI - 16M	16	12.7	25.4	25	24.4	22.0	28.7	38.8
SUTI - 18M	18	15.1	27.0	30	24.4	22.0	29.7	38.8
SUTI - 20M	20	15.9	34.9	32	26.0	22.0	34.5	44.6
SUTI - 25M	25	21.8	34.9	38	31.3	26.5	36.8	49.1

• All dimensions in millimeters unless specified as "inch". Dimension are for reference only, subject to change
 • Any size not in the list is available upon request.

SRUTI

Reducing Union Tee



Connects Fractional Tubes

Part No.	Tube O.D.		d Min	Width Across Flat			A	A1	B	B1	I	I1	I2	L	L1	L2
	D (inch)	D ₁ (inch)		h (inch)	H (inch)	H ₁ (inch)										
SRUTI - 6 - 4	3/8	1/4	4.82	5/8	11/16	9/16	16.76	15.24	19.30	17.78	46.22	23.11	21.59	60.96	30.48	28.95
SRUTI - 8 - 4	1/2	1/4	4.82	13/16	7/8	9/16	22.86	15.24	21.84	17.78	51.81	25.90	24.38	72.13	36.06	31.75
SRUTI - 8 - 6	1/2	3/8	7.11	13/16	7/8	11/16	22.86	16.76	21.84	19.30	51.81	25.90	25.90	72.13	36.06	33.27
SRUTI - 12 - 6	3/4	3/8	7.11	1 1/16	1 1/8	11/16	24.38	16.76	21.84	19.30	59.43	29.71	29.71	79.75	39.87	37.08
SRUTI - 12 - 8	3/4	1/2	10.41	1 1/16	1 1/8	7/8	24.38	22.86	21.84	21.84	59.43	29.71	29.71	79.75	39.87	39.87
SRUTI - 16 - 6	1	3/8	7.11	1 3/8	1 1/2	1 1/16	31.24	16.76	26.41	19.30	73.66	36.83	34.54	98.04	49.02	41.91
SRUTI - 16 - 8	1	1/2	10.41	1 3/8	1 1/2	7/8	31.24	21.84	26.41	22.86	73.66	36.83	34.54	98.04	49.02	44.70
SRUTI - 16 - 12	1	3/4	15.74	1 3/8	1 1/2	1 1/8	31.24	24.38	26.41	21.84	73.66	36.83	34.54	98.04	49.02	44.70

Connects Metric Tubes

Part No.	Tube O.D.		d Min	Width Across Flat			A	A1	B	B1	I	I1	I2	L	L1	L2
	D	D ₁		h	H	H ₁										
SRUTI - 8M - 6M	8	6	4.8	15.9	16	14	16.8	15.3	19.2	17.8	46.2	23.1	21.6	62.4	31.2	29.0
SRUTI - 12M - 6M	12	6	4.8	20.6	22	14	23.0	15.3	22.0	17.8	51.8	25.9	25.9	72.5	36.2	33.3
SRUTI - 12M - 8M	12	8	6.4	20.6	22	16	23.0	16.8	22.0	19.2	51.8	25.9	25.1	72.5	36.2	33.2
SRUTI - 12M - 10M	12	10	7.9	20.6	22	19	23.0	17.5	22.0	19.8	51.8	25.9	25.9	72.5	36.2	33.8
SRUTI - 18M - 10M	18	10	7.9	27.0	30	19	24.8	17.5	22.5	19.8	59.4	29.7	29.7	81.7	40.3	37.6
SRUTI - 18M - 12M	18	12	9.5	27.0	30	22	24.8	23.0	25.5	22.2	59.4	29.7	29.7	80.7	40.3	40.0
SRUTI - 25M - 12M	25	12	9.5	34.9	38	22	31.3	23.0	26.6	22.2	73.6	36.8	34.5	98.2	49.1	44.8
SRUTI - 25M - 18M	25	18	15.1	34.9	38	30	31.3	24.8	26.6	22.5	73.6	36.8	34.5	98.2	49.1	45.1
SRUTI - 25M - 20M	25	20	15.9	34.9	38	32	31.3	26.6	26.6	22.6	73.6	36.8	34.5	98.2	49.1	45.2

• All dimensions in millimeters unless specified as "inch". Dimension are for reference only, subject to change
 • Any size not in the list is available upon request.

SMBTI

Male
Branch Tee



Connects Fractional Tubes To Female NPT Thread

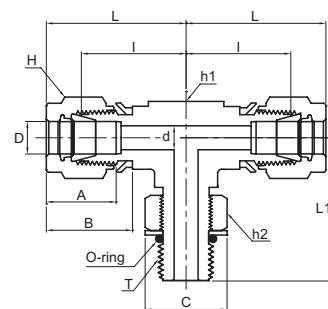
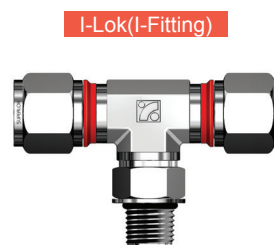
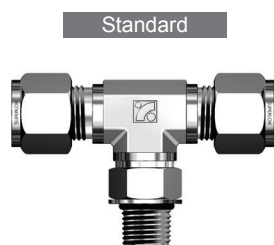
Part No.	Tube O.D. D (inch)	T (NPT)	d Min	Width Across Flat		A	B	I	L	L ₁
				h (inch)	H (inch)					
SMBTI - 4 - 2N	1/4	1/8	4.82	1/2	9/16	15.24	17.78	19.55	26.92	18.79
SMBTI - 4 - 4N	1/4	1/4	4.82	1/2	9/16	15.24	17.78	19.55	26.92	23.36
SMBTI - 6 - 4N	3/8	1/4	7.11	5/8	11/16	16.76	19.30	23.11	30.48	25.40
SMBTI - 6 - 6N	3/8	3/8	7.11	5/8	11/16	16.76	19.30	23.10	30.48	28.19
SMBTI - 8 - 6N	1/2	3/8	9.65	13/16	7/8	22.86	21.84	25.90	36.06	28.19
SMBTI - 8 - 8N	1/2	1/2	10.41	13/16	7/8	22.86	21.84	25.90	36.06	33.02
SMBTI - 12 - 12N	3/4	3/4	15.74	1-1/16	1-1/8	24.38	21.84	29.71	39.87	36.83

Connects Metric Tubes To Female ISO Tapered Thread

Part No.	Tube O.D. D	T (PT)	d Min	Width Across Flat		A	B	I	L	L ₁
				h	H					
SMBTI - 6M - 2R	6	1/8	4.8	12.7	14	15.3	17.7	19.6	27.0	18.8
SMBTI - 6M - 4R	6	1/4	4.8	12.7	14	15.3	17.7	19.6	27.0	23.4
SMBTI - 8M - 4R	8	1/4	6.4	15.9	16	16.2	18.6	22.4	29.9	25.4
SMBTI - 10M - 4R	10	1/4	7.1	17.5	19	17.2	19.5	23.9	31.5	28.2
SMBTI - 10M - 6R	10	3/8	7.9	17.5	19	17.2	19.5	23.9	31.5	28.2
SMBTI - 12M - 4R	12	1/4	7.1	20.6	22	22.8	22.0	25.9	36.0	28.2
SMBTI - 12M - 6R	12	3/8	9.5	20.6	22	22.8	22.0	25.9	36.0	28.2
SMBTI - 12M - 8R	12	1/2	9.5	20.6	22	22.8	22.0	25.9	36.0	33.0
SMBTI - 16M - 6R	16	3/8	9.5	25.4	25	24.4	22.0	27.9	38.0	30.2
SMBTI - 16M - 8R	16	1/2	11.9	25.4	25	24.4	22.0	27.9	38.0	35.1
SMBTI - 20M - 12R	20	3/4	15.9	31.8	32	26.0	22.0	34.5	44.6	41.7

SPMBTI

Positionable
Male Branch Tee



Connects Fractional Tubes To Female ISO Parallel Thread

Part No.	Tube O.D. D (inch)	T (PF)	d Min	Width Across Flat			A	B	I	L	L1	C
				h1 (inch)	h2 (inch)	H (inch)						
SPMBTI - 4 - 2G	1/4	1/8	4.06	1/2	9/16	9/16	15.24	17.78	19.56	26.92	26.42	17.27
SPMBTI - 4 - 4G	1/4	1/4	4.83	5/8	3/4	9/16	15.24	17.78	21.59	28.96	32.26	22.86
SPMBTI - 6 - 4G	3/8	1/4	5.08	5/8	3/4	11/16	15.24	19.30	23.11	30.48	32.26	22.86
SPMBTI - 8 - 6G	3/8	3/8	7.87	13/16	7/8	7/8	22.86	21.84	25.91	36.07	37.08	26.42
SPMBTI - 8 - 8G	1/2	1/2	10.41	15/16	1-1/16	7/8	22.86	21.84	27.94	38.10	43.43	32.00
SPMBTI - 12 - 8G	3/4	1/2	11.94	1-1/16	1-1/16	1-1/8	24.38	21.84	29.72	39.88	45.21	32.00
SPMBTI - 12 - 12G	3/4	3/4	15.75	1-1/16	1-3/8	1-1/8	24.38	21.84	29.72	39.88	48.77	41.15
SPMBTI - 16 - 16G	1	1	19.81	1-3/8	1-5/8	1-1/2	31.24	26.42	36.83	49.02	53.59	48.51

Connects Metric Tubes To Female ISO Parallel Thread

Part No.	Tube O.D. D	T (PF)	d Min	Width Across Flat			A	B	I	L	L1	C
				h1	h2	H						
SPMBTI - 6M - 2G	6	1/8	4.0	12.7	14.3	14	15.3	17.7	19.6	27.0	26.4	17.3
SPMBTI - 6M - 4G	6	1/4	4.8	15.8	19	14	15.3	17.7	21.6	29.0	32.3	22.9
SPMBTI - 8M - 2G	8	1/8	4.0	14.3	14.3	16	16.2	18.6	21.3	28.8	27.4	17.3
SPMBTI - 8M - 4G	8	1/4	5.9	15.8	19	16	16.2	18.6	22.4	29.9	32.2	22.9
SPMBTI - 10M - 4G	10	1/4	5.9	20.6	19	19	17.2	19.5	25.9	33.5	35.0	22.9
SPMBTI -12M - 8G	12	1/2	9.5	23.8	27	22	22.8	22.0	27.9	38.0	35.0	32.0

Connects Fractional Tubes To SAE/MS Straight Thread Boss

Part No.	Tube O.D. D (inch)	Straight Thread T(U)	d Min	Width Across Flat			A	B	I	L	L1	C
				h1 (inch)	h2 (inch)	H (inch)						
SPMBTI - 4 - 4U	1/4	7/16-20	4.83	1/2	9/16	9/16	15.24	17.78	21.08	28.45	28.45	16.51
SPMBTI - 6 - 6U	3/8	9/16-18	7.11	5/8	11/16	11/16	16.76	19.30	24.64	32.00	32.26	20.07
SPMBTI - 8 - 8U	1/2	3/4-16	10.41	13/16	7/8	7/8	22.86	21.84	27.43	37.59	37.85	25.65
SPMBTI -12 - 12U	3/4	1-1/16-12	15.75	1-1/16	1-1/4	1-1/8	24.38	21.84	31.24	41.40	48.77	36.58
SPMBTI -16 - 16U	1	1-5/16-12	22.35	1-3/8	1-1/2	1-1/2	31.24	26.42	38.35	50.55	53.59	43.94

Connects Metric Tubes To SAE/MS Straight Thread Boss

Part No.	Tube O.D. D	Straight Thread T(U)	d Min	Width Across Flat			A	B	I	L	L1	C
				h1	h2	H						
SPMBTI - 6M - 4U	6	7/16-20	4.8	12.7	14.3	14	15.2	17.7	21.1	28.4	28.5	16.5
SPMBTI - 12M - 8U	12	3/4-16	9.5	20.6	22.2	22	22.8	21.8	27.4	37.5	37.9	25.6
SPMBTI - 18M - 12U	18	1-1/16-12	15.1	27	31.7	28	24.3	21.8	31.2	41.4	48.8	36.5
SPMBTI - 25M - 16U	25	1-5/16-12	21.8	34.9	38.1	38	31.2	26.4	38.4	50.5	53.6	43.9

• All dimensions in millimeters unless specified as "inch". Dimension are for reference only, subject to change
 • Any size not in the list is available upon request.

SMRTI

Male Run Tee



Connects Fractional Tubes To Female NPT Thread

Part No.	Tube O.D. D (inch)	T (NPT)	d Min	Width Across Flat		A	B	I	L	L1
				h (inch)	H (inch)					
SMRTI - 4 - 2N	1/4	1/8	4.82	1/2	9/16	15.24	17.78	19.55	26.92	18.79
SMRTI - 4 - 4N	1/4	1/4	4.82	1/2	9/16	15.24	17.78	19.55	26.92	23.36
SMRTI - 6 - 4N	3/8	1/4	7.11	5/8	11/16	16.76	19.30	23.11	30.48	25.40
SMRTI - 6 - 6N	3/8	3/8	7.11	5/8	11/16	16.76	19.30	23.10	30.48	28.19
SMRTI - 8 - 6N	1/2	3/8	9.65	13/16	7/8	22.86	21.84	25.90	36.06	28.19
SMRTI - 8 - 8N	1/2	1/2	10.41	13/16	7/8	22.86	21.84	25.90	36.06	33.02
SMRTI -12 - 12N	3/4	3/4	15.74	1-1/16	1-1/8	24.38	21.84	29.71	39.87	36.83

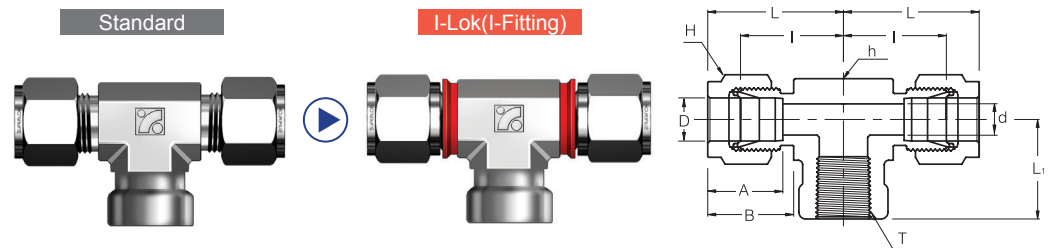
Connects Metric Tubes To Female ISO Tapered Thread

Part No.	Tube O.D. D	T (PT)	d Min	Width Across Flat		A	B	I	L	L1
				h	H					
SMRTI - 6M - 2R	6	1/8	4.8	12.7	14	15.3	17.7	19.6	27.0	18.8
SMRTI - 6M - 4R	6	1/4	4.8	12.7	14	15.3	17.7	19.6	27.0	23.4
SMRTI - 8M - 4R	8	1/4	6.4	15.9	16	16.2	18.6	22.4	29.9	25.4
SMRTI - 10M - 4R	10	1/4	7.1	17.5	19	17.2	19.5	23.9	31.5	28.2
SMRTI - 10M - 6R	10	3/8	7.9	17.5	19	17.2	19.5	23.9	31.5	28.2
SMRTI - 12M - 4R	12	1/4	7.1	20.6	22	22.8	22.0	25.9	36.0	28.2
SMRTI - 12M - 8R	12	1/2	9.5	20.6	22	22.8	22.0	25.9	36.0	33.0
SMRTI - 16M - 6R	16	3/8	9.5	25.4	25	24.4	22.0	27.9	38.0	30.2
SMRTI - 16M - 8R	16	1/2	11.9	25.4	25	24.4	22.0	27.9	38.0	35.1
SMRTI - 20M - 12R	20	3/4	15.9	31.8	32	26.0	22.0	34.5	44.6	41.7

• All dimensions in millimeters unless specified as "inch". Dimension are for reference only, subject to change
 • Any size not in the list is available upon request.

SFBTI

Female
Branch Tee



Connects Fractional Tubes To Male NPT Thread

Part No.	Tube O.D. D (inch)	T (NPT)	d Min	Width Across Flat		A	B	I	L	L1
				h (inch)	H (inch)					
SFBTI - 4 - 2N	1/4	1/8	4.82	1/2	9/16	15.24	17.78	19.55	26.92	19.05
SFBTI - 4 - 4N	1/4	1/4	4.82	11/16	9/16	15.24	17.78	22.35	29.71	22.35
SFBTI - 6 - 4N	3/8	1/4	7.11	11/16	11/16	16.76	19.30	23.87	31.24	22.35
SFBTI - 6 - 6N	3/8	3/8	7.11	13/16	11/16	16.76	19.30	25.90	33.27	22.35
SFBTI - 6 - 8N	3/8	1/2	7.11	1	11/16	16.76	19.30	28.70	36.07	28.45
SFBTI - 8 - 4N	1/2	1/4	10.41	13/16	7/8	22.86	21.84	25.90	36.06	22.35
SFBTI - 8 - 6N	1/2	3/8	10.41	13/16	7/8	22.86	21.84	25.90	36.06	22.35
SFBTI - 8 - 8N	1/2	1/2	10.41	1	7/8	22.86	21.84	28.70	38.86	28.44
SFBTI - 16 - 12N	1	3/4	22.35	1-3/8	1-1/2	31.24	26.41	36.83	49.02	31.75
SFBTI - 16 - 16N	1	1	22.35	1-11/16	1-1/2	31.24	26.41	41.40	53.59	38.10

Connects Metric Tubes To Male ISO Tapered Thread

Part No.	Tube O.D. D	T (PT)	d Min	Width Across Flat		A	B	I	L	L1
				h	H					
SFBTI - 6M - 4R	6	1/4	4.8	17.46	14	15.3	17.7	22.4	29.8	22.4
SFBTI - 6M - 6R	6	3/8	4.8	20.63	14	15.3	17.7	24.4	31.7	22.4
SFBTI - 6M - 8R	6	1/2	4.8	25.40	14	15.3	17.7	27.2	34.5	28.4
SFBTI - 8M - 2R	8	1/8	6.4	15.87	16	16.2	18.6	22.4	29.9	19.0
SFBTI - 8M - 4R	8	1/4	6.4	17.46	16	16.2	18.6	23.1	30.6	22.4
SFBTI - 8M - 6R	8	3/8	6.4	20.63	16	16.2	18.6	25.2	32.4	22.4
SFBTI - 8M - 8R	8	1/2	6.4	25.40	16	16.2	18.6	28.0	35.2	28.4
SFBTI - 10M - 4R	10	1/4	7.9	20.63	19	17.2	19.5	25.9	33.5	22.4
SFBTI - 12M - 4R	12	1/4	9.5	20.63	22	22.8	22.0	25.9	36.0	22.4
SFBTI - 12M - 6R	12	3/8	9.5	20.63	22	22.8	22.0	25.9	36.0	22.4
SFBTI - 16M - 8R	16	1/2	12.7	25.40	25	24.4	22.0	28.7	38.8	28.4

SFRTI

Female Run Tee



Connects Fractional Tubes To Male NPT Thread

Part No.	Tube O.D. D (inch)	T (NPT)	d Min	Width Across Flat		A	B	I	L	L1
				h (inch)	H (inch)					
SFRTI - 4 - 2N	1/4	1/8	4.82	1/2	9/16	15.24	17.78	19.55	26.92	19.05
SFRTI - 4 - 4N	1/4	1/4	4.82	11/16	9/16	15.24	17.78	22.35	29.71	22.35
SFRTI - 6 - 4N	3/8	1/4	7.11	11/16	11/16	16.76	19.30	23.87	31.24	22.35
SFRTI - 8 - 6N	1/2	3/8	10.41	13/16	7/8	22.86	21.84	25.90	36.06	22.35
SFRTI - 8 - 8N	1/2	1/2	10.41	1	7/8	22.86	21.84	28.70	39.87	28.44
SFRTI -12 - 12N	3/4	3/4	15.74	1-3/8	1-1/8	24.38	21.84	34.54	44.70	31.75
SFRTI -16 - 12N	1	3/4	22.35	1-3/8	1-1/2	31.24	26.41	36.83	49.02	31.75
SFRTI -16 - 16N	1	1	22.35	1-11/16	1-1/2	31.24	26.41	41.40	53.59	38.10

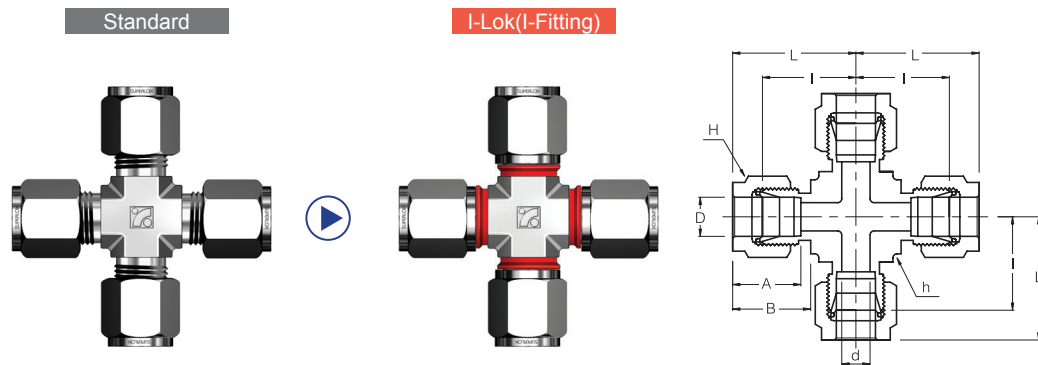
Connects Metric Tubes To Male ISO Tapered Thread

Part No.	Tube O.D. D	T (PT)	d Min	Width Across Flat		A	B	I	L	L1
				h	H					
SFRTI - 6M - 4R	6	1/4	4.8	17.4	14	15.3	17.7	22.4	29.8	22.4
SFRTI - 6M - 8R	6	1/2	4.8	25.4	14	15.3	17.7	27.2	34.5	28.4
SFRTI - 8M - 2R	8	1/8	6.4	15.8	16	16.2	18.6	22.4	29.9	19.0
SFRTI - 8M - 4R	8	1/4	6.4	17.4	16	16.2	18.6	23.1	30.6	22.4
SFRTI - 8M - 6R	8	3/8	6.4	20.6	16	16.2	18.6	25.2	32.4	22.4
SFRTI - 8M - 8R	8	1/2	6.4	25.4	16	16.2	18.6	28.0	35.2	28.4
SFRTI - 12M - 4R	12	1/4	9.5	20.6	22	22.8	22.0	25.9	33.5	22.4
SFRTI - 12M - 6R	12	3/8	9.5	20.6	22	22.8	22.0	25.9	36.0	22.4
SFRTI - 16M - 8R	16	1/2	12.7	25.4	25	24.4	22.0	29.7	39.8	28.4

• All dimensions in millimeters unless specified as "inch". Dimension are for reference only, subject to change
 • Any size not in the list is available upon request.

SUCI

Union Cross



Connects Fractional Tubes

Part No.	Tube O.D. D (inch)	d Min	Width Across Flat		A	B	I	L
			h (inch)	H (inch)				
SUCI - 4	1/4	4.82	1/2	9/16	15.24	17.78	19.55	26.92
SUCI - 6	3/8	7.11	5/8	11/16	16.76	19.30	23.11	30.48
SUCI - 8	1/2	10.41	13/16	7/8	22.86	21.84	25.90	36.06
SUCI - 12	3/4	15.74	1	1-1/8	24.38	21.84	29.71	39.87
SUCI - 16	1	22.35	1-3/8	1-1/2	31.24	26.41	36.83	49.02

Connects Metric Tubes

Part No.	Tube O.D. D	d Min	Width Across Flat		A	B	I	L
			h	H				
SUCI - 6M	6	4.8	12.7	14	15.3	17.7	19.6	27.0
SUCI - 8M	8	6.4	15.9	16	16.2	18.6	22.4	29.9
SUCI - 10M	10	7.9	20.6	19	17.2	19.5	25.9	33.5
SUCI - 12M	12	9.5	20.6	22	22.8	22.0	25.9	36.0
SUCI - 16M	16	12.7	23.8	25	24.4	22.0	26.9	37.0
SUCI - 18M	18	15.1	25.4	30	24.4	22.0	28.2	38.3
SUCI - 20M	20	15.9	34.9	32	26.0	22.0	34.5	44.6
SUCI - 25M	25	21.8	34.9	38	31.3	26.5	36.8	49.1

• All dimensions in millimeters unless specified as "inch". Dimension are for reference only, subject to change
 • Any size not in the list is available upon request.

SAUI

An Union



Connects Fractional Tubes To An Flared Tubes

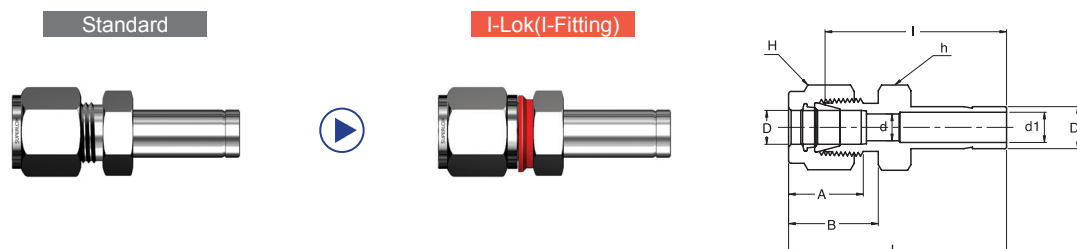
Part No.	Tube O.D. (inch)	AN Tube Flare Size (inch)	Straight Thread T (U)	d Min	Width Across Flat		A	B	I	L
					h (inch)	H (inch)				
SAUI - 4 - 4U	1/4	1/4	7/16-20	4.31	1/2	9/16	15.24	17.78	30.22	37.59
SAUI - 6 - 4U	3/8	1/4	7/16-20	4.31	5/8	11/16	16.76	19.30	32.25	39.62
SAUI - 6 - 6U	3/8	3/8	9/16-18	7.11	5/8	11/16	16.76	19.30	32.25	39.62
SAUI - 8 - 8U	1/2	1/2	3/4-16	9.90	13/16	7/8	22.86	21.84	35.81	45.97
SAUI -12 - 12U	3/4	3/4	1-1/16-12	15.49	1-1/8	1-1/8	24.38	21.84	43.18	53.34
SAUI -16 - 16U	1	1	1-5/16-12	21.33	1-3/8	1-1/2	31.24	26.41	49.27	61.46

Connects Fractional Tubes To An Flared Tubes

Part No.	Tube O.D.	AN Tube Flare Size (inch)	Straight Thread T (U)	d Min	Width Across Flat		A	B	I	L
					h	H				
SAUI - 6M - 4U	6	1/4	7/16-20	4.8	12.7	14	15.2	17.7	30.20	37.5
SAUI - 12M - 8U	12	1/2	3/4-16	9.5	20.6	22	22.8	21.8	35.80	45.9
SAUI - 18M - 12U	18	3/4	1-1/16-12	15.1	28.6	30	24.3	21.8	43.20	53.3
SAUI - 25M - 16U	25	1	1-5/16-12	21.8	34.9	38	31.2	26.4	49.27	61.4

• All dimensions in millimeters unless specified as "inch". Dimension are for reference only, subject to change
 • Any size not in the list is available upon request.

SRI Reducer



Connects Fractional Tubes To Fractional SUPERLOK Port

Part No.	Tube O.D.		d Min	d1 Min	Width Across Flat		A	B	I	L
	D (inch)	D ₁ (inch)			h (inch)	H (inch)				
SRI - 4 - 2	1/4	1/8	4.83	2.1	1/2	9/16	15.24	17.78	29.46	36.83
SRI - 4 - 3	1/4	3/16	4.83	3.0	1/2	9/16	15.24	17.78	30.22	37.59
SRI - 4 - 4	1/4	1/4	4.83	4.4	1/2	9/16	15.24	17.78	31.75	39.11
SRI - 4 - 5	1/4	5/16	4.83	5.6	1/2	9/16	15.24	17.78	32.51	39.87
SRI - 4 - 6	1/4	3/8	4.83	6.9	1/2	9/16	15.24	17.78	33.27	40.64
SRI - 4 - 8	1/4	1/2	4.83	9.4	9/16	9/16	15.24	17.78	38.86	46.22
SRI - 4 - 10	1/4	5/8	4.83	12.0	11/16	9/16	15.24	17.78	40.64	48.00
SRI - 4 - 12	1/4	3/4	4.83	14.8	13/16	9/16	15.24	17.78	41.40	47.75
SRI - 6 - 4	3/8	1/4	7.11	4.4	5/8	11/16	16.76	19.30	34.03	41.40
SRI - 6 - 6	3/8	3/8	7.11	6.9	5/8	11/16	16.76	19.30	35.81	43.18
SRI - 6 - 8	3/8	1/2	7.11	9.4	5/8	11/16	16.76	19.30	41.14	48.51
SRI - 6 - 10	3/8	5/8	7.11	12.0	11/16	11/16	16.76	19.30	42.92	50.29
SRI - 6 - 12	3/8	3/4	7.11	14.8	13/16	11/16	16.76	19.30	42.92	50.29
SRI - 8 - 4	1/2	1/4	10.41	4.4	13/16	7/8	22.86	21.84	34.79	44.95
SRI - 8 - 6	1/2	3/8	10.41	6.9	13/16	7/8	22.86	21.84	36.57	46.73
SRI - 8 - 8	1/2	1/2	10.41	9.4	13/16	7/8	22.86	21.84	42.16	52.32
SRI - 8 - 10	1/2	5/8	10.41	12.0	13/16	7/8	22.86	21.84	43.68	53.84
SRI - 8 - 12	1/2	3/4	10.41	14.8	13/16	7/8	22.86	21.84	43.68	53.84
SRI - 8 - 16	1/2	1	10.41	20.4	1-1/16	7/8	22.86	21.84	50.03	60.19
SRI - 12 - 8	3/4	1/2	15.74	9.4	1-1/16	1-1/8	24.38	21.84	44.45	54.61
SRI - 12 - 16	3/4	1	15.74	20.4	1-1/16	1-1/8	24.38	21.84	52.32	62.48

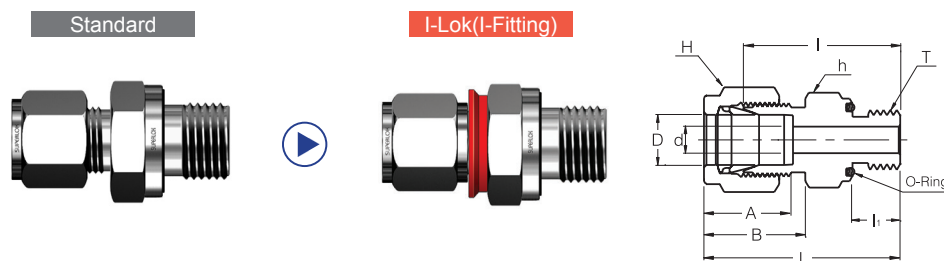
Connects Metric Tubes To Metric SUPERLOK Port

Part No.	Tube O.D.		d Min	d1 Min	Width Across Flat		A	B	I	L
	D	D ₁			h	H				
SRI - 6M - 8M	6	8	4.8	5.6	14	14	15.3	17.7	32.5	39.9
SR - 6M - 10M	6	10	4.8	7.1	14	14	15.3	17.7	33.3	40.7
SR - 8M - 6M	8	6	6.4	4.1	15	16	16.2	18.6	32.8	40.3
SR - 8M - 10M	8	10	6.4	7.1	15	16	16.2	18.6	34.5	42.0
SR - 10M - 6M	10	6	7.9	4.1	18	19	17.2	19.5	34.8	42.4
SR - 10M - 8M	10	8	7.9	5.6	18	19	17.2	19.5	35.8	43.4
SR - 10M - 12M	10	12	7.9	8.8	18	19	17.2	19.5	42.2	49.8
SR - 12M - 8M	12	8	9.5	5.6	22	22	22.8	22.0	35.8	45.9
SR - 12M - 10M	12	10	9.5	7.1	22	22	22.8	22.0	36.6	46.7
SR - 18M - 12M	18	12	15.1	8.8	27	30	24.4	22.0	44.5	54.6
SR - 18M - 16M	18	16	15.1	12.0	27	30	24.4	22.0	46.0	56.1
SR - 18M - 20M	18	20	15.1	15.5	27	30	24.4	22.0	47.5	57.6
SR - 25M - 18M	25	18	21.8	13.9	35	38	31.3	26.5	50.8	63.1
SR - 25M - 20M	25	20	21.8	15.5	35	38	31.3	26.5	52.3	64.6

• All dimensions in millimeters unless specified as "inch". Dimension are for reference only, subject to change
 • Any size not in the list is available upon request.

SOSCI

O-Seal Straight Thread Connector



Connects Fractional Tube To Female Straight Thread

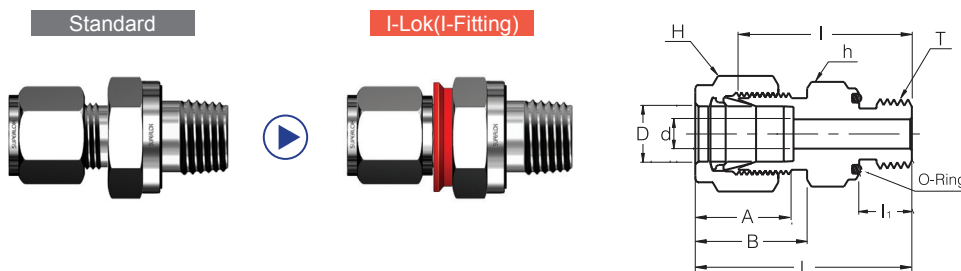
Part No.	Tube O.D. D (inch)	Straight Thread T (U)	d Min	Width Across Flat		A	B	I	I ₁	L	O-Ring Uniform Size Number
				h (inch)	H (inch)						
SOSCI - 4 - 4U	1/4	7/16-20	4.82	3/4	9/16	15.24	17.78	30.98	10.41	38.35	-111
SOSCI - 6 - 6U	3/8	9/16-18	7.11	15/16	11/16	16.76	19.30	35.05	11.93	42.41	-114
SOSCI - 8 - 8U	1/2	3/4-16	10.41	1-1/8	7/8	22.86	21.84	35.81	11.93	45.97	-116
SOSCI - 12 - 12U	3/4	1-1/16-12	15.75	1-1/2	1-1/8	24.38	21.84	42.16	14.22	52.32	-215
SOSCI - 16 - 16U	1	1-5/16-12	22.35	1-3/4	1-1/2	31.24	26.41	45.97	14.22	58.16	-219

Connects Metric Tube To Female Straight Thread

Part No.	Tube O.D. D	Straight Thread T (U)	d Min	Width Across Flat		A	B	I	I ₁	L	O-Ring Uniform Size Number
				h	H						
SOSCI - 6M - 4U	6	7/16-20	4.8	19	14	15.2	17.7	31.0	10.4	38.3	-111
SOSCI - 12M - 8U	12	3/4-16	9.5	28.6	22	22.8	21.8	35.8	11.9	45.9	-116
SOSCI - 18M - 12U	18	1-1/16-12	15.1	38.1	28	24.3	21.8	42.2	14.2	52.3	-215
SOSCI - 25M - 16U	25	1-5/16-12	21.8	44.4	38	31.2	26.4	46.0	14.2	58.1	-219

SOPCI

O-Seal Pipe Thread Connector



Connects Fractional Tube To Female NPT Thread

Part No.	Tube O.D. D (inch)	T* (NPT)	d Min	Width Across Flat		A	B	I	I ₁	L	O-Ring Uniform Size Number
				h (inch)	H (inch)						
SOPCI - 4 - 2N	1/4	1/8	4.82	3/4	9/16	15.24	17.78	27.68	7.11	35.05	-111
SOPCI - 4 - 4N	1/4	1/4	4.82	15/16	9/16	15.24	17.78	30.98	9.65	38.35	-113
SOPCI - 6 - 4N	3/8	1/4	7.11	15/16	11/16	16.76	19.30	32.51	9.65	39.87	-113
SOPCI - 6 - 6N	3/8	3/8	7.11	1-1/8	11/16	16.76	19.30	34.03	10.41	41.40	-116
SOPCI - 6 - 8N	3/8	1/2	7.11	1-5/16	11/16	16.76	19.30	39.62	13.46	46.99	-212
SOPCI - 8 - 8N	1/2	1/2	10.41	1-5/16	7/8	22.86	21.84	39.62	13.46	49.78	-212

• All dimensions in millimeters unless specified as "inch". Dimension are for reference only, subject to change
 • Any size not in the list is available upon request.

SSMCI SAE/MS Male Connector



Connects Fractional Tubes To SAE/MS Straight Thread Boss

Part No.	Tube O.D. D (inch)	Straight Thread T (U)	d Min	Width Across Flat		A	B	I	I1	L	O-Ring Uniform Size Number
				h (inch)	H (inch)						
SSMCI - 4 - 4U	1/4	7/16-20	4.82	9/16	9/16	15.24	17.78	26.67	9.14	34.03	3-904
SSMCI - 4 - 6U	1/4	9/16-18	4.82	11/16	9/16	15.24	17.78	28.19	9.90	35.56	3-906
SSMCI - 4 - 8U	1/4	3/4-16	4.82	7/8	9/16	15.24	17.78	30.22	11.17	37.59	3-908
SSMCI - 4 - 10U	1/4	7/8-14	4.82	1	9/16	15.24	17.78	33.27	12.70	40.64	3-910
SSMCI - 6 - 4U	3/8	7/16-20	5.08	5/8	11/16	16.76	19.30	28.19	9.14	35.56	3-904
SSMCI - 6 - 6U	3/8	9/16-18	7.11	11/16	11/16	16.76	19.30	29.71	9.90	37.08	3-906
SSMCI - 6 - 8U	3/8	3/4-16	7.11	7/8	11/16	16.76	19.30	31.75	11.17	39.11	3-908
SSMCI - 6 - 10U	3/8	7/8-14	7.11	1	11/16	16.76	19.30	34.79	12.70	42.16	3-910
SSMCI - 8 - 6U	1/2	9/16-18	7.11	13/16	7/8	22.86	21.84	28.95	9.90	39.11	3-906
SSMCI - 8 - 8U	1/2	3/4-16	10.41	7/8	7/8	22.86	21.84	31.75	11.17	41.91	3-908
SSMCI - 8 - 10U	1/2	7/8-14	10.41	1	7/8	22.86	21.84	34.79	12.70	44.95	3-910
SSMCI - 8 - 12U	1/2	1-1/16-12	10.41	1-1/4	7/8	22.86	21.84	38.86	14.98	49.02	3-912
SSMCI - 12 - 8U	3/4	3/4-16	10.66	1-1/16	1-1/8	24.38	21.84	35.81	11.17	45.97	3-908
SSMCI - 12 - 12U	3/4	1-1/16-12	15.74	1-1/4	1-1/8	24.38	21.84	38.86	14.98	49.02	3-912
SSMCI - 16 - 12U	1	1-1/16-12	16.76	1-3/8	1-1/2	31.24	26.41	41.14	14.98	53.34	3-912
SSMCI - 16 - 16U	1	1-5/16-12	22.35	1-1/2	1-1/2	31.24	26.41	42.16	14.98	54.35	3-916

Connects Metric Tubes To SAE/MS Straight Thread Boss

Part No.	Tube O.D. D	Straight Thread T (U)	d Min	Width Across Flat		A	B	I	I1	L	O-Ring Uniform Size Number
				h	H						
SSMCI - 6M - 4U	6	7/16-20	4.8	14.3	14.3	15.2	17.7	26.7	9.1	34.0	3-904
SSMCI - 6M - 6U	6	9/16-18	4.8	17.4	14.3	15.2	17.7	28.2	9.9	35.5	3-906
SSMCI - 6M - 8U	6	3/4-16	4.8	22.2	14.3	15.2	17.7	30.2	11.2	37.5	3-908
SSMCI - 6M - 10U	6	7/8-14	4.8	25.4	14.3	15.2	17.7	33.3	12.7	40.6	3-910
SSMCI - 12M - 6U	12	9/16-18	7.1	20.6	22.2	22.8	21.8	29.0	9.9	39.1	3-906
SSMCI - 12M - 8U	12	3/4-16	9.5	22.2	22.2	22.8	21.8	31.8	11.2	41.9	3-908
SSMCI - 12M - 10U	12	7/8-14	9.5	25.4	22.2	22.8	21.8	34.8	12.7	44.9	3-910
SSMCI - 12M - 12U	12	1-1/16-12	9.5	31.7	22.2	22.8	21.8	38.9	15.0	49.0	3-912
SSMCI - 18M - 8U	18	3/4-16	10.6	27	28.6	24.3	21.8	35.8	11.2	45.9	3-908
SSMCI - 18M - 12U	18	1-1/16-12	15.1	34.9	28.6	24.3	21.8	38.9	15.0	49.0	3-912
SSMCI - 25M - 12U	25	1-1/16-12	16.7	34.9	38.1	31.2	26.4	41.1	15.0	53.3	3-912
SSMCI - 25M - 16U	25	1-5/16-12	21.8	38.1	38.1	31.2	26.4	42.2	15.0	54.3	3-916

• All dimensions in millimeters unless specified as "inch". Dimension are for reference only, subject to change
 • Any size not in the list is available upon request.

SPWCI

Male Pipe
Weld Connector



Connects Fractional Tubes To Pipe

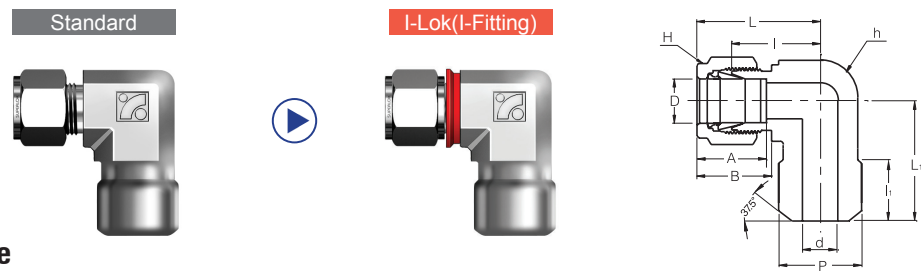
Part No.	Tube O.D. D (inch)	Male Pipe Size(P)		d Min	Width Across Flat		A	B	I	I ₁	L
		Nom.	O.D.		h (inch)	H (inch)					
SPWCI - 4 - 2P	1/4	1/8	10.30	4.82	1/2	9/16	15.24	17.78	25.40	9.65	32.76
SPWCI - 4 - 4P	1/4	1/4	13.70	4.82	9/16	9/16	15.24	17.78	30.48	14.22	37.84
SPWCI - 6 - 4P	3/8	1/4	13.70	7.11	5/8	11/16	16.76	19.30	32.51	14.22	39.87
SPWCI - 6 - 6P	3/8	3/8	17.10	7.11	11/16	11/16	16.76	19.30	32.51	14.22	39.87
SPWCI - 6 - 8P	3/8	1/2	21.30	7.11	7/8	11/16	16.76	19.30	38.86	19.05	46.22
SPWCI - 8 - 6P	1/2	3/8	17.10	10.41	13/16	7/8	22.86	21.84	33.27	14.22	43.43
SPWCI - 8 - 8P	1/2	1/2	21.30	10.41	7/8	7/8	22.86	21.84	38.86	19.05	49.02
SPWCI -12 - 12P	3/4	3/4	26.67	15.74	1-1/16	1-1/18	24.38	21.84	40.38	19.05	50.54
SPWCI -16 - 16P	1	1	33.40	22.35	1-3/8	1-1/2	31.24	26.41	50.03	23.87	62.23

Connects Metric Tubes To Pipe

Part No.	Tube O.D. D	Male Pipe Size(P)		d Min	Width Across Flat		A	B	I	I ₁	L
		Nom.	O.D.		h	H					
SPWCI - 6M - 2P	6	1/8	10.3	4.8	14	14	15.3	17.7	25.4	9.7	32.8
SPWCI - 6M - 4P	6	1/4	13.7	4.8	14	14	15.3	17.7	30.5	14.2	37.9
SPWCI - 8M - 8P	8	1/2	21.3	6.4	22	16	16.2	18.6	38.1	19.0	45.6
SPWCI - 10M - 4P	10	1/4	13.7	7.1	18	19	17.2	19.5	33.3	14.2	40.9
SPWCI - 10M - 6P	10	3/8	17.1	7.9	18	19	17.2	19.5	33.3	14.2	40.9
SPWCI - 10M - 8P	10	1/2	21.3	7.9	22	19	17.2	19.5	38.9	19.0	46.5
SPWCI - 12M - 4P	12	1/4	13.7	7.1	22	22	22.8	22.0	33.3	14.2	43.4
SPWCI - 16M - 8P	16	1/2	21.3	12.7	24	25	24.4	22.0	38.9	19.0	49.0
SPWCI - 18M - 8P	18	1/2	21.3	13.5	27	30	24.4	22.0	40.4	19.0	50.5

SMPWEI

Male Pipe Weld
Elbow



Connects Fractional Tubes To Pipe

Part No.	Tube O.D. D (inch)	Male Pipe Size(P)		d Min	Width Across Flat		A	B	I	I ₁	L	L ₁
		Nom.	O.D.		h (inch)	H (inch)						
SMPWEI - 4 - 4P	1/4	1/4	13.70	4.82	1/2	9/16	15.24	17.78	19.55	14.22	26.90	23.37
SMPWEI - 6 - 4P	3/8	1/4	13.70	7.11	5/8	11/16	16.76	19.30	23.11	14.22	30.48	25.40
SMPWEI - 8 - 8P	1/2	1/2	21.30	10.41	13/16	7/8	22.86	21.84	25.90	19.05	36.06	33.02

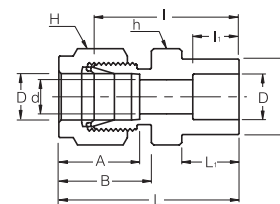
Connects Metric Tubes To Pipe

Part No.	Tube O.D. D	Male Pipe Size(P)		d Min	Width Across Flat		A	B	I	I ₁	L	L ₁
		Nom.	O.D.		h	H						
SMPWEI - 6M - 4P	6	1/4	13.70	4.8	12.7	14.3	15.2	17.7	19.6	14.2	26.9	23.4
SMPWEI - 12M - 8P	12	1/2	21.30	9.5	20.6	22.2	22.8	21.8	25.9	19.1	36.1	33.0

• All dimensions in millimeters unless specified as "inch". Dimension are for reference only, subject to change
 • Any size not in the list is available upon request.

SSWCI

Tube Socket Weld Connector



Connects Fractional Tubes

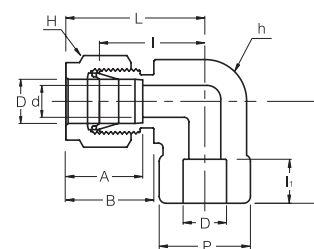
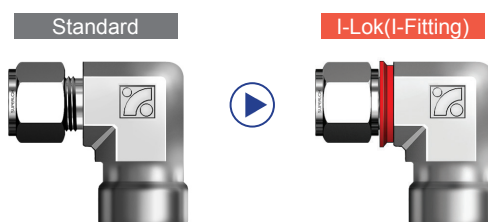
Part No.	Tube O.D. D (inch)	d Min	P	Width Across Flat		A	B	I	I ₁	L	L ₁
				h (inch)	H (inch)						
SSWCI - 4	1/4	4.82	11.17	1/2	9/16	15.24	17.78	26.16	7.87	33.52	10.41
SSWCI - 6	3/8	7.11	15.74	5/8	11/16	16.76	19.30	30.22	9.65	37.59	11.93
SSWCI - 8	1/2	10.41	19.05	13/16	7/8	22.86	21.84	30.98	12.70	41.14	11.93
SSWCI -12	3/4	15.74	26.67	1-1/16	1-1/8	24.38	21.84	33.27	14.22	43.43	11.93
SSWCI - 16	1	22.35	33.27	1-3/8	1-1/2	31.24	26.41	40.38	19.05	52.57	14.22

Connects Metric Tubes

Part No.	Tube O.D. D	d Min	P	Width Across Flat		A	B	I	I ₁	L	L ₁
				h	H						
SSWCI - 6M	6	4.8	11.17	12.7	14.3	15.2	17.7	26.2	7.9	33.5	10.4
SSWCI - 12M	12	9.5	19.05	20.6	22.2	22.8	21.8	31.0	12.7	41.1	11.9
SSWCI - 18M	18	15.1	26.67	27	28.6	24.3	21.8	33.3	14.2	43.4	11.9
SSWCI - 25M	25	21.8	33.27	34.9	38.1	31.2	26.4	40.4	19.1	52.6	14.2

SSWEI

Tube Socket Weld Elbow



Connects Fractional Tubes

Part No.	Tube O.D. D (inch)	d Min	P	Width Across Flat		A	B	I	I ₁	L	L ₁
				h (inch)	H (inch)						
SSWEI - 4	1/4	4.82	12.70	1/2	9/16	15.24	17.78	19.55	7.87	26.92	19.55
SSWEI - 6	3/8	7.11	15.75	5/8	11/16	16.76	19.30	23.11	9.65	30.48	23.11
SSWEI - 8	1/2	10.41	20.57	13/16	7/8	22.86	21.84	25.90	12.70	36.06	25.90
SSWEI - 12	3/4	15.74	26.92	1-1/16	1-1/8	24.38	21.84	29.71	14.22	39.87	29.71
SSWEI - 16	1	22.35	35.05	1-3/8	1-1/2	31.24	26.41	36.83	19.05	49.02	36.83

Connects Metric Tubes

Part No.	Tube O.D. D	d Min	P	Width Across Flat		A	B	I	I ₁	L	L ₁
				h	H						
SSWEI - 6M	6	4.8	12.70	12.7	14.3	15.2	17.7	19.6	7.9	26.9	19.6
SSWEI - 12M	12	9.5	20.57	20.6	22.2	22.8	21.8	25.9	12.7	36.1	25.9
SSWEI -18M	18	15.1	26.92	27	28.6	24.3	21.8	29.7	14.2	39.9	29.7
SSWEI - 25M	25	21.8	35.05	34.9	38.1	31.2	26.4	36.8	19.1	49.0	36.8