

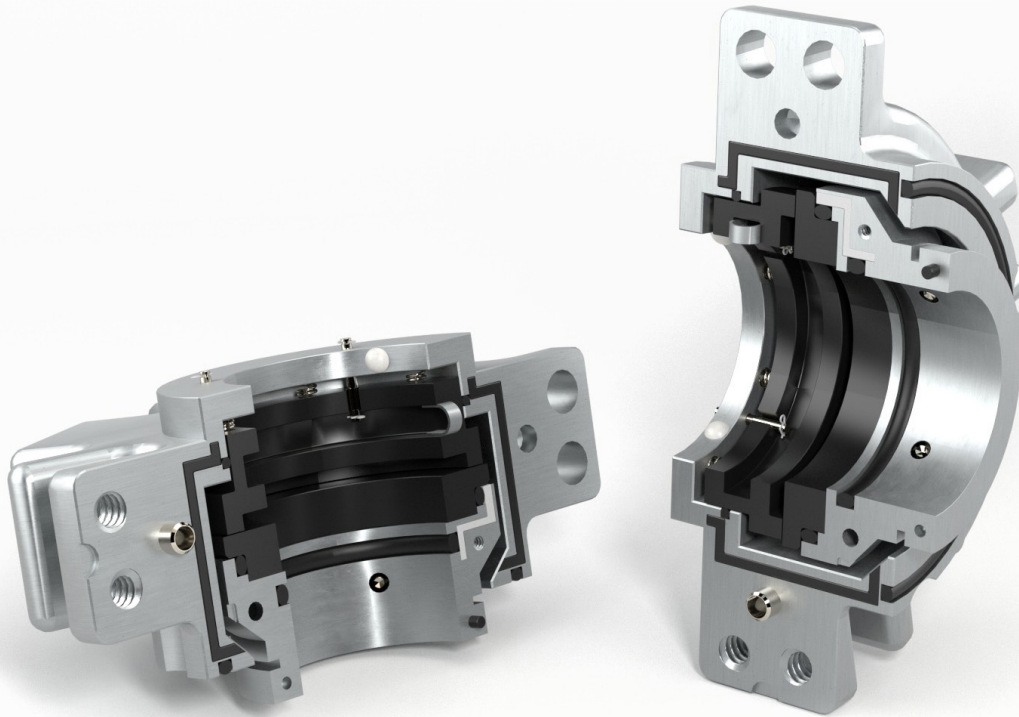


A.R. THOMSON GROUP INC.

GASKETS • SEALS • PACKING • INSTRUMENTATION VALVES & FITTINGS

Single Split Mechanical Seal

TRS 310



**MINIMIZE DOWNTIME - WITH THE
ADVANTAGE OF A SPLIT DESIGN**

TRS 310

These are the unique features and benefits available only with the TRS 310 Split Single Seal.

ADVANTAGES OF A SPLIT SEAL VS PACKING:

- Installed without dismantling equipment.
- Reduced maintenance and inventory costs.
- Won't wear or score shaft sleeve.
- No need to adjust or maintain.
- Eliminates leakage required to cool packing.
- Increases Up-time.
- Less housekeeping.
- Lower power consumption = reduced carbon footprint.
- Field repairable.
- Increases safety & reduces liability.

EQUIPMENT APPLICATIONS:

- Pumps
- Agitators
- Blenders
- Separators
- Dryers
- Mixers
- Refiners
- Equipment with limited access.

APPLICABLE INDUSTRIES:

- Pulp and Paper, especially Liquor Applications
- Corn/Grain/Food Processing
- Steel
- Wastewater
- Breweries
- Mining
- Power Generation
- Petroleum/Chemical (nonhazardous)

TECHNICAL DATA:

Sizes	1 1/2" thru 7"*
Temperatures	250°F
Operating Conditions	1 1/2", 2 5/8": 200 PSI, 3600 RPM
	2 3/4", 2 5/8": 150 PSI, 1750 RPM
	4 7/8", 7": 100 PSI, 875 RPM

MATERIALS OF CONSTRUCTION:

Face Combinations	Carbon vs Silicon Carbide Silicon Carbide vs Silicon Carbide
Springs	Alloy C276
Elastomers	Ethylene Propylene, Fluoroelastomer, *AFLAS®
Rotary Collar Gland Bolts	316SS 316SS 316SS

LARGE INTERNAL CLEARANCES

Allows for excessive radial or axial movement.

DYNAMIC O-RING

The design provides clean area for the stationary component to advance beneath o-ring.

STATIONARY SPRINGS

Isolated from pumped fluid and unaffected if gland is misaligned.

GLAND IS SELF-CENTERING

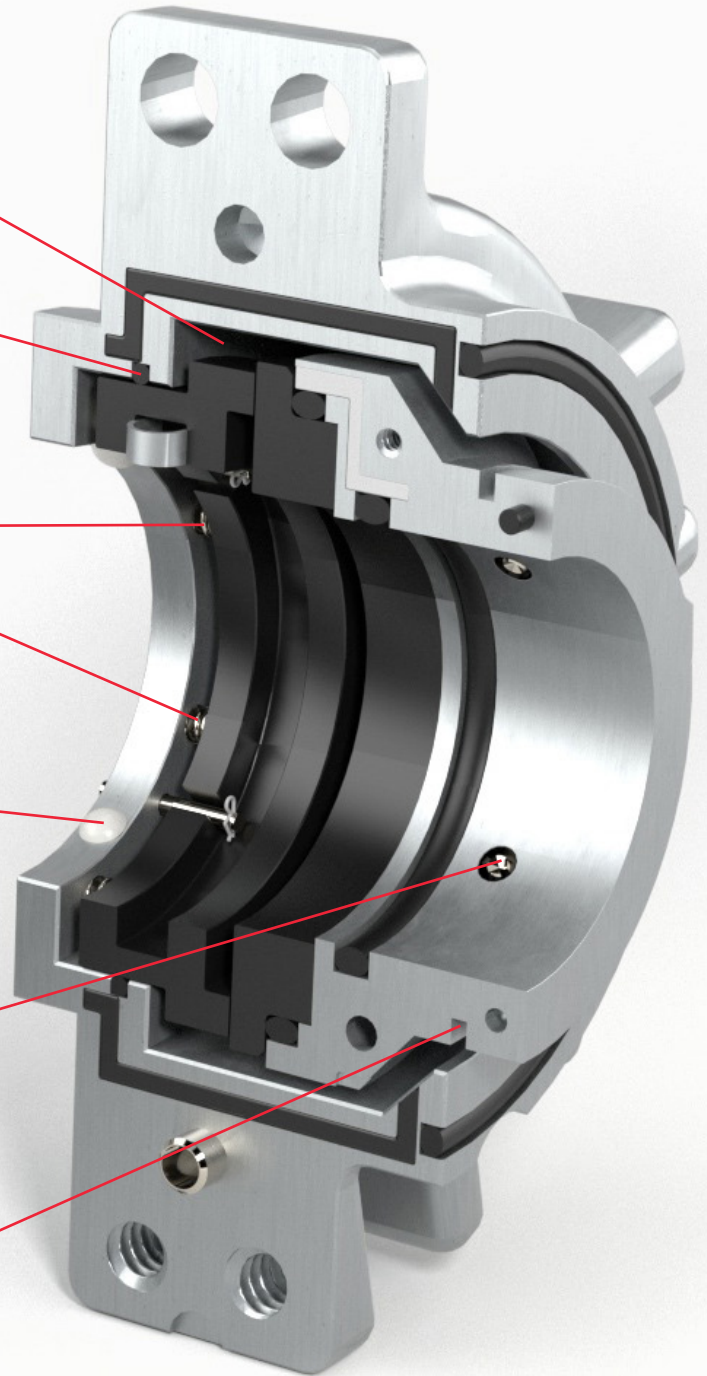
Spacers are affixed in place preventing their accidental removal.

ROTARY UNIT

Locked to shaft by set of screws, virtually eliminating slippage of collar.

ROTARY COLLAR

Positions without measuring. Disposable Spacer allows for quick, easy positioning.

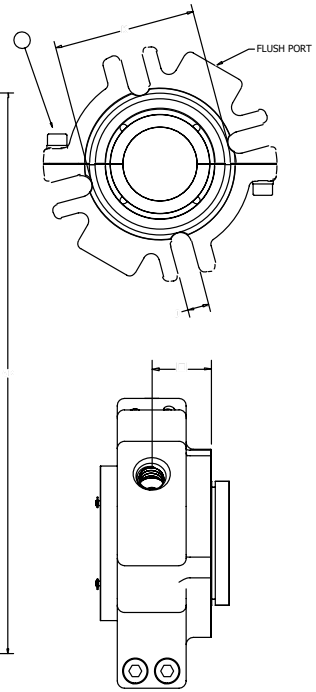
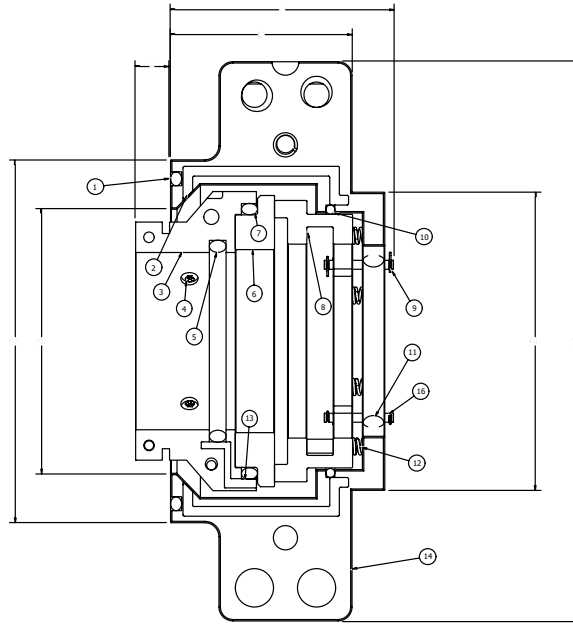


NO ADHESIVE INVOLVED IN THE INSTALLATION

This simplifies and speeds up the procedure.

TRS 310 - SPLIT SINGLE SEAL

ITEM	DESCRIPTION
1	O-RING
2	GLAND SEAM GASKET
3	ROTARY COLLAR
4	SET SCREWS
5	O-RING
6	ROTARY FACE
7	RETAINING CLIP
8	O-RING
9	RETAINING CLIP
10	O-RING
11	CENTERING SPACERS
12	SPRINGS
13	COLLAR SEAM GASKET
14	GLAND
15	CAP SCREW / WASHERS
16	ANTI-ROTATION PIN



A	B (MIN)	B (MAX)	C (MIN)	D	E	F	G	H	I	J	K	L
1.500	2.25	2.50	2.75	5.00	2.50	2.19	1.78	1.13	.28	.56	2.94	.66
1.625	2.38	2.63	2.88	5.00	2.63	2.19	1.78	1.13	.28	.56	3.06	.66
1.750	2.50	2.75	3.00	5.50	2.75	2.19	1.78	1.13	.28	.56	3.19	.66
1.875	2.63	2.88	3.13	5.50	2.88	2.19	1.78	1.13	.28	.56	3.31	.66
1.937	2.75	3.00	3.25	5.50	3.00	2.19	1.78	1.13	.28	.69	3.44	.66
2.000	2.75	3.00	3.25	5.50	3.00	2.19	1.78	1.13	.28	.56	3.44	.66
2.125	2.88	3.13	3.38	6.00	3.13	2.19	1.78	1.13	.28	.69	3.56	.66
2.187	2.94	3.19	3.44	6.25	3.19	2.19	1.78	1.13	.28	.69	3.62	.66
2.250	3.00	3.25	3.50	6.25	3.25	2.19	1.78	1.13	.28	.69	3.69	.66
2.375	3.13	3.38	3.63	6.50	3.38	2.19	1.78	1.13	.28	.69	3.81	.66
2.500	3.25	3.75	4.00	6.50	3.50	2.19	1.78	1.13	.28	.69	4.06	.66
2.625	3.38	3.88	4.13	6.62	3.62	2.19	1.78	1.13	.28	.69	4.19	.66
2.750	3.63	4.25	4.69	7.75	3.94	2.56	2.06	1.34	.38	.69	5.03	.72
2.875	3.75	4.38	4.81	7.88	4.05	2.56	2.06	1.34	.38	.72	5.15	.72
2.937	3.81	4.44	4.88	8.00	4.11	2.56	2.06	1.34	.38	.72	5.21	.72
3.000	3.88	4.50	4.94	8.00	4.19	2.56	2.06	1.34	.38	.72	5.28	.72
3.250	4.13	4.75	5.19	8.25	4.44	2.56	2.06	1.34	.38	.72	5.53	.72
3.375	4.25	4.88	5.31	8.38	4.56	2.56	2.06	1.34	.38	.72	5.66	.72
3.500	4.38	5.00	5.44	8.50	4.69	2.56	2.06	1.34	.38	.81	5.78	.72
3.625	4.50	5.13	5.56	8.63	4.81	2.56	2.06	1.34	.38	.81	5.91	.72
3.750	4.63	5.25	5.69	8.75	4.94	2.56	2.06	1.34	.38	.81	5.94	.72
3.875	4.75	5.31	5.81	8.88	5.06	2.56	2.06	1.34	.38	.81	6.07	.72
4.000	4.88	5.50	5.94	9.00	5.19	2.56	2.06	1.34	.38	.81	6.28	.72
4.250	5.13	5.75	6.19	9.25	5.44	2.56	2.06	1.34	.38	.81	6.44	.72
4.375	5.25	5.88	6.32	9.38	5.56	2.56	2.06	1.34	.38	.81	6.56	.72
4.500	5.38	6.00	6.44	9.50	5.69	2.56	2.06	1.34	.38	.81	6.69	.72
4.750	5.63	6.25	6.69	9.75	5.94	2.56	2.06	1.34	.38	.81	7.03	.72
5.000	5.88	7.00	7.50	11.00	6.50	3.56	3.00	1.88	.50	.94	7.63	1.12
5.250	6.13	7.25	7.75	11.25	6.75	3.56	3.00	1.88	.50	.94	7.88	1.12
5.375	6.25	7.38	7.88	11.38	6.88	3.56	3.00	1.88	.50	.94	8.00	1.12
5.500	6.38	7.50	8.00	11.50	7.00	3.56	3.00	1.88	.50	.94	8.13	1.12
6.000	6.88	8.00	8.50	12.00	7.50	3.56	3.00	1.88	.50	.94	8.63	1.12
6.250	7.13	8.25	8.75	12.25	7.75	3.56	3.00	1.88	.50	.94	8.88	1.12
6.500	7.38	8.50	9.00	12.50	8.00	3.56	3.00	1.88	.50	.94	9.13	1.12
7.000	7.88	9.00	9.50	13.00	8.50	3.56	3.00	1.88	.50	.94	9.63	1.12

Limitation of liability: actual performance may vary and is determined by factors unique to a given application. It is recommended that care be taken in the selection and application of materials for hazardous services and controlled testing be undertaken to determine suitability for a specific application. A.R. Thomson Group Inc. does not make or imply any warranty of suitability for a particular purpose and is not liable for any damages arising from the use of the information in this sheet.



Locations across Canada to serve you. For your nearest branch, please visit: www.arthomson.com
Copyright © A.R. Thomson Group Inc. - All rights reserved.

OTHER PRODUCTS



METALLIC GASKETS

Thomson CANFLEX® spiral wound, Kammprofile, high temperature, heat exchanger and ring joint gaskets. We manufacture gaskets from all common metals, exotic alloys and filler materials in all configurations for the most extreme applications.



FASTENERS

All thread studs – ASTM 193 Grade B7, B7M, B8, B8M, B16, ASTM A320 L7, L7M; heavy hex nuts – ASTM A194 Grade 2H, 2HM, 4, L7, L7M, 8 and 8M; Through hardened washers – ASTM F-436; custom coatings; specialty fabricated and machined studs; CANFLEX® approved thread lubricant.



SUPERLOK CANADA

Instrumentation Tube, Pipe, JIC and DIN Fittings. Instrumentation Ball, Bleed, Check, Double Block and Bleed, Needle, Plug, and Purge Relief Valves. Quick Connects and Filters. Flexible Metal Hose, Tubing and Accessories.



NON-METALLIC GASKETS

Thomson Performance Sealing (TSP) and gaskets fabricated from all types of sheet material including compressed cork, cork/rubber blends, gasket types, Teflon™, Garlock®, Gore®, all rubber materials, Thomson Multipac and Flexible Graphite.



The A.R. Thomson Group Inc. was established in 1967 as a regional manufacturer & distributor of gaskets and other fluid containment products. With the rapid growth of oil and gas production, petrochemical, oil refining and pulp and paper industries, our manufacturing facilities expanded to meet increased demand for these products. Since 1967, we have developed our expertise and know-how to become the leader in solving fluid containment problems. No matter what your containment needs are, we can help.