

UNION		ELBOW		TEE/CROSS		TUBE STUB		O-RING SEAL	
<b>SU</b> Union		<b>SUE</b> Union Elbow		<b>SUT</b> Union Tee		<b>SR</b> Reducer		<b>SOSC</b> O-Seal Straight Thread Connector	
<b>SRU</b> Reducing Union		<b>SME</b> Male Elbow Male NPT Elbow Male ISO/BSPP Elbow		<b>SRUT</b> Reducing Union Tee		<b>SBR</b> Bulkhead Reducer		<b>SOPC</b> O-Seal Pipe Thread Connector	
<b>SBHU</b> Bulkhead Union		<b>SHUE</b> 45° Union Elbow		<b>SMBT</b> Male Branch Tee		<b>SMA</b> Male Adapter Male NPT Male ISO/BSPP		<b>SSMC</b> SAE/MS Male Connector	
<b>SBHRU</b> Bulkhead Reducing Union		<b>SHME</b> 45° Male Elbow		<b>SPMBT</b> Positionable Male Branch Tee SAE/MS (O-Ring Boss)		<b>SGMA</b> Male Adapter ISO/BSPP Bonded Washer Seal		<b>PLUG &amp; CAP</b>	
<b>SDE</b> Dielectric Union		<b>SPHME</b> 45° Positionable Male Elbow SAE/MS (O-Ring Boss)		<b>SMRT</b> Male Run Tee		<b>SSMA</b> Male Adapter SAE (O-Ring Boss)		<b>SC</b> Cap	
<b>CONNECTOR</b>		<b>SPME</b> Positionable Male Elbow SAE/MS (O-Ring Boss) ISO/BSPP		<b>SPMRT</b> Positionable Male Branch Tee SAE/MS (O-Ring Boss)		<b>SFA</b> Female Adapter		<b>SP</b> Plug	
<b>SMC</b> Male Connector Male NPT Male ISO/BSPP		<b>SFE</b> Female Elbow		<b>SFBT</b> Female Branch Tee		<b>SPC</b> Port Connector		<b>SPARE PARTS</b>	
<b>SGMC</b> Male Connector Male ISO/BSPP Bonded Washer Seal		<b>SAE</b> Tube Elbow		<b>SART</b> Tube Run Tee		<b>SRPC</b> Reducing Port Connector		<b>SN</b> Nut	
<b>SMC-GM</b> Male Connector Male ISO/BSPP Metal Gasket Seal		<b>AN TUBE</b>		<b>SFRT</b> Female Run Tee		<b>WELD END</b>		<b>SF</b> Single Ferrule	
<b>SFC</b> Female Connector		<b>SAF</b> An Flare		<b>SUC</b> Union Cross		<b>SPWC</b> Male Pipe Weld Connector		<b>SFF</b> Front Ferrule	
<b>SGC</b> Female Connector ISO/BSPP		<b>SAU</b> An Union		<b>FLANGE</b>		<b>SMPWE</b> Male Pipe Weld Elbow		<b>SFB</b> Back Ferrule	
<b>SMCB</b> Bulkhead Male Connector		<b>SAA</b> An Adapter		<b>SSFA</b> Sanitary Flange		<b>SSWC</b> Tube Socket Weld Connector		<b>SFS</b> Ferrule Set	
<b>SFCB</b> Bulkhead Female Connector		<b>SABU</b> An Tube Bulkhead		<b>SFLA</b> Flange Adapter		<b>SSWE</b> Tube Socket Weld Elbow		<b>SI</b> Insert	
								<b>SBHR</b> Bulkhead Retainer	
								<b>SVP</b> Vent Protector	

## PIPE FITTINGS

NIPPLE		ELBOW		TEE/CROSS		ADAPTER/COUPLING		PLUG & CAP/BSPP GASKETS	
<b>ICN</b> Close Nipple		<b>IFE</b> Female Elbow		<b>IFT</b> Female Tee		<b>IA</b> Adapter		<b>IPP</b> Pipe Plug	
<b>IHN</b> Hex Nipple		<b>ISE</b> Street Elbow		<b>IRT</b> Run Tee		<b>IRA</b> Reducing Adapter		<b>IPC</b> Pipe Cap	
<b>IHLN</b> Hex Long Nipple		<b>IRSE</b> Reducing Street Elbow		<b>IBT</b> Branch Tee		<b>IRHB</b> Reducing Hex Busing		<b>IPG</b> ISO Parallel Gasket	
<b>IHRN</b> Hex Reducing Nipple		<b>IME</b> Male Elbow		<b>IMT</b> Male Tee		<b>IHC</b> Hex Coupling		<b>IBG</b> ISO Parallel Bonded Washer	
				<b>IFC</b> Female Cross		<b>IHRC</b> Hex Reducing Coupling			

## PUSH ON HOSE FITTINGS

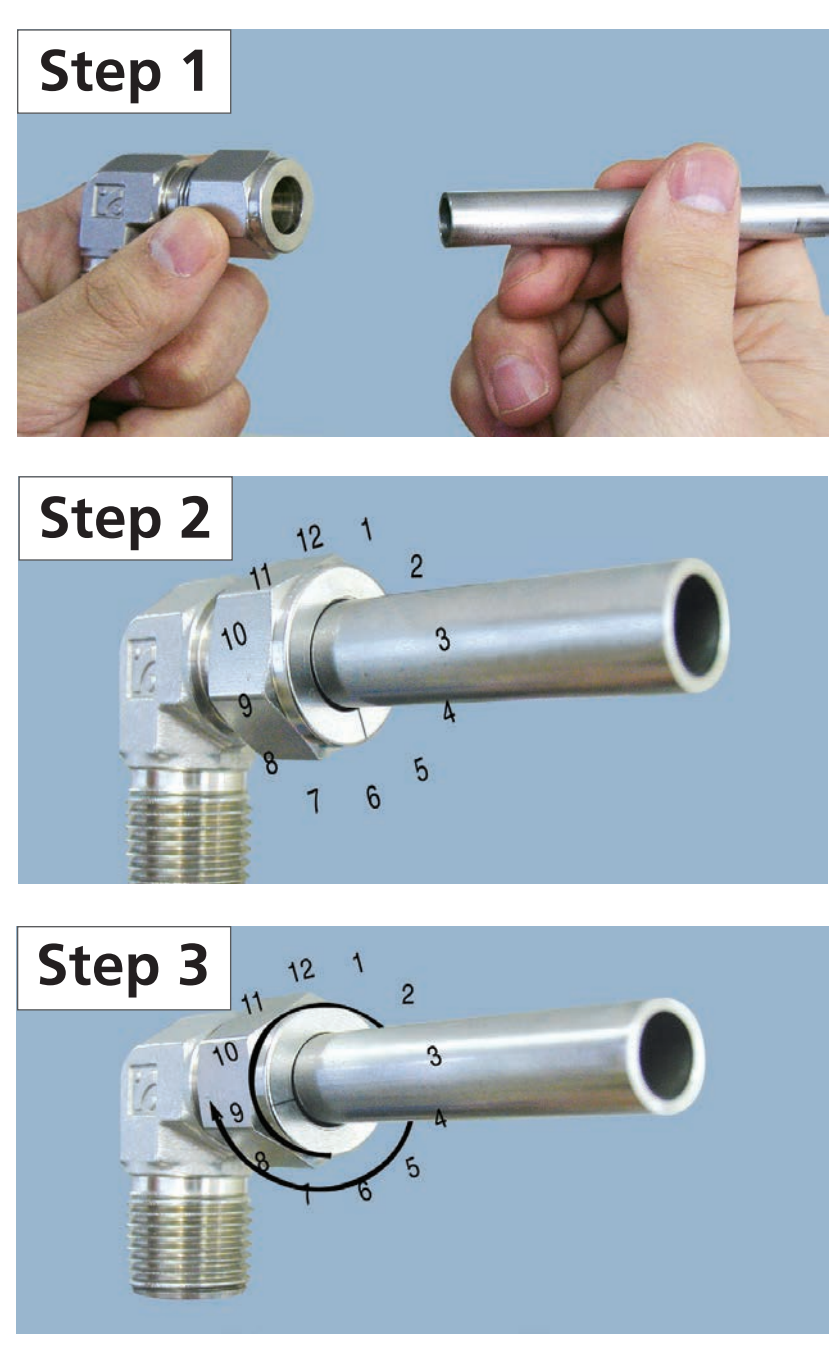
<b>Tube Adapter</b>		<b>Straight Union</b>		<b>Fitting Body</b>		<b>Superlok Tube Fitting</b>		<b>Male Pipe Thread</b>	
---------------------	--	-----------------------	--	---------------------	--	------------------------------	--	-------------------------	--

### SUPERLOK STANDARD FITTINGS INSTALLATION

#### Installation under 1 inch or 25 mm:

Superlok Tube Fitting arrives fully assembled, preventing contamination and leaks. Install in three easy steps:

- Step 1**  
Insert the tubing into Superlok Tube Fitting. At this point, make sure that the tubing is in contact with the internal shoulder of fitting and then finger-tighten the nut.
- Step 2**  
Before tightening the Superlok nut, mark the starting point at the 6 o'clock position.
- Step 3**  
With a wrench, tighten the nut 1-1/4 turns to the 9 o'clock position for sizes 1/4" to 1". For 1/16", 1/8", and 3/16", tighten the nut 3/4 turns to the 3 o'clock position. Ensure fitting is properly made using a Superlok Gap Inspection Gauge.



#### High-Pressure & Severe Service System Installation:

For high-pressure or severe service systems, ensure a consistent starting point. Slightly tighten the fitting until tubing doesn't rotate freely, then tighten the nut 1-1/4 turns.

### SUPERLOK TUBE FITTINGS ORDERING INFORMATION

## SMC - 8 - 8N - SS

1      2-1      2-2      3

<b>1 Type of Fitting</b> Refer to Product Index above. Examples:	<b>2-1 Size of Fitting: Tube O.D. Designation</b>	<b>3 Material</b>																																																												
<table border="1"> <tr><td>Union</td><td>SU</td></tr> <tr><td>Male Connector (i-Fitting)</td><td>SMC</td></tr> <tr><td>Union Elbow</td><td>SUE</td></tr> <tr><td>Union Tee</td><td>SUT</td></tr> <tr><td>Weld Connector</td><td>SWC</td></tr> <tr><td>Reducer</td><td>SR</td></tr> <tr><td>SAE/MS O-Ring Male Connector</td><td>SSMC</td></tr> <tr><td>AN Union</td><td>SAU</td></tr> <tr><td>Plug</td><td>SP</td></tr> </table>	Union	SU	Male Connector (i-Fitting)	SMC	Union Elbow	SUE	Union Tee	SUT	Weld Connector	SWC	Reducer	SR	SAE/MS O-Ring Male Connector	SSMC	AN Union	SAU	Plug	SP	<table border="1"> <tr><th>O.D. (in.)</th><th>1/16</th><th>1/8</th><th>3/16</th><th>1/4</th><th>5/16</th><th>3/8</th><th>1/2</th><th>5/8</th><th>3/4</th><th>7/8</th><th>1</th><th>1-1/4</th><th>1-1/2</th><th>2</th></tr> <tr><td>Identify</td><td>1</td><td>2</td><td>3</td><td>4</td><td>5</td><td>6</td><td>8</td><td>10</td><td>12</td><td>14</td><td>16</td><td>20</td><td>24</td><td>32</td></tr> </table>	O.D. (in.)	1/16	1/8	3/16	1/4	5/16	3/8	1/2	5/8	3/4	7/8	1	1-1/4	1-1/2	2	Identify	1	2	3	4	5	6	8	10	12	14	16	20	24	32	<table border="1"> <tr><td>Aluminum</td><td>A</td></tr> <tr><td>Brass and Copper</td><td>B</td></tr> <tr><td>Carbon Steel</td><td>C</td></tr> <tr><td>Stainless Steel</td><td>SS</td></tr> <tr><td>Monel Alloy 400</td><td>M</td></tr> <tr><td>Inconel Alloy 600</td><td>INC</td></tr> </table>	Aluminum	A	Brass and Copper	B	Carbon Steel	C	Stainless Steel	SS	Monel Alloy 400	M	Inconel Alloy 600	INC
Union	SU																																																													
Male Connector (i-Fitting)	SMC																																																													
Union Elbow	SUE																																																													
Union Tee	SUT																																																													
Weld Connector	SWC																																																													
Reducer	SR																																																													
SAE/MS O-Ring Male Connector	SSMC																																																													
AN Union	SAU																																																													
Plug	SP																																																													
O.D. (in.)	1/16	1/8	3/16	1/4	5/16	3/8	1/2	5/8	3/4	7/8	1	1-1/4	1-1/2	2																																																
Identify	1	2	3	4	5	6	8	10	12	14	16	20	24	32																																																
Aluminum	A																																																													
Brass and Copper	B																																																													
Carbon Steel	C																																																													
Stainless Steel	SS																																																													
Monel Alloy 400	M																																																													
Inconel Alloy 600	INC																																																													
	<b>2-2 Size of Fitting: Pipe Thread Designation</b>																																																													
	<table border="1"> <tr><th>Size (in.)</th><th>1/8</th><th>1/4</th><th>3/8</th><th>1/2</th><th>3/4</th><th>1</th><th>Applied Size</th></tr> <tr><td>ISO Tapered</td><td>2R</td><td>4R</td><td>6R</td><td>8R</td><td>12R</td><td>16R</td><td>JIS B0203(PT), DIN2999, BSPT</td></tr> <tr><td>NPT</td><td>2N</td><td>4N</td><td>6N</td><td>8N</td><td>12N</td><td>16N</td><td>ANSI B1.20.1</td></tr> <tr><td>ISO Parallel</td><td>2G</td><td>4G</td><td>6G</td><td>8G</td><td>12G</td><td>16G</td><td>JIS B0202(PF), ISO 228/1, BSPP</td></tr> <tr><td>Unified Screw</td><td>2U</td><td>4U</td><td>6U</td><td>8U</td><td>12U</td><td>16U</td><td>American Standard Unified Screw Thread</td></tr> </table>	Size (in.)	1/8	1/4	3/8	1/2	3/4	1	Applied Size	ISO Tapered	2R	4R	6R	8R	12R	16R	JIS B0203(PT), DIN2999, BSPT	NPT	2N	4N	6N	8N	12N	16N	ANSI B1.20.1	ISO Parallel	2G	4G	6G	8G	12G	16G	JIS B0202(PF), ISO 228/1, BSPP	Unified Screw	2U	4U	6U	8U	12U	16U	American Standard Unified Screw Thread																					
Size (in.)	1/8	1/4	3/8	1/2	3/4	1	Applied Size																																																							
ISO Tapered	2R	4R	6R	8R	12R	16R	JIS B0203(PT), DIN2999, BSPT																																																							
NPT	2N	4N	6N	8N	12N	16N	ANSI B1.20.1																																																							
ISO Parallel	2G	4G	6G	8G	12G	16G	JIS B0202(PF), ISO 228/1, BSPP																																																							
Unified Screw	2U	4U	6U	8U	12U	16U	American Standard Unified Screw Thread																																																							

### SUPERLOK CERTIFICATIONS