

Thomson Sealing System

FLOW PRO™



TYPICAL APPLICATIONS

Thomson Flowmeter ESF
 1335-PSEXXX, inline check valve
 FLUSH PLAN 32 shut off any
 discharge lines, gland water supply
 +25 PSI > stuffing box pressure to
 ensure positive flow.

Optional Materials:

Stainless Steel 304SS	PEEK™
Stainless Steel 316SS	WR® 300 PEEK
Stainless Steel 17- 4PH SS	WR® 525 PEEK
Bearing Bronze	WR® 650 PEEK
Aluminum Bronze Alloy 954	AR® 1
Greene Tweed	AR® HT

Reduces flush water and extends equipment life.

FEATURES / BENEFITS

Extends equipment life by protecting sleeve (non contact) and isolates packing from media attack.

Significant cost savings:

- Reduces flush water requirements as much as 70–90% (as demonstrated with the installation of a Thomson ESF Flowmeter).
- Eliminates packing extruded into the process.
- Reduces number of packing rings and includes integral lantern ring – never lose lantern ring position again!

Controls the stuffing box environment:

Harmful solids and particulate are contained from entering the stuffing box as the flush water is forced by the FLOW PRO™ bushing's unique designs:

- Integral flush grooves multi-porting.
- Solid close tolerance bushing.
- Split or solid.
- 4-piece split unitized design for minimal axial space available (first obstruction) - replaceable wearing element.
- SS threaded inserts for easier removal.

SPECIFICATIONS

Construction - FLOW PRO Bushing:

Standard material carbon graphite-filled PTFE.

Max Pressure:

To 300 PSI rotary
 To 2500 PSI valve packing

pH range:

0–14pH (except strong oxidizers)

Temperatures:

-250°F (-157°C) to
 450°F (232°C)

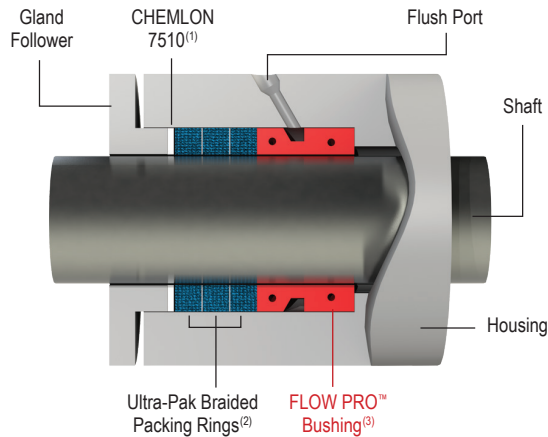
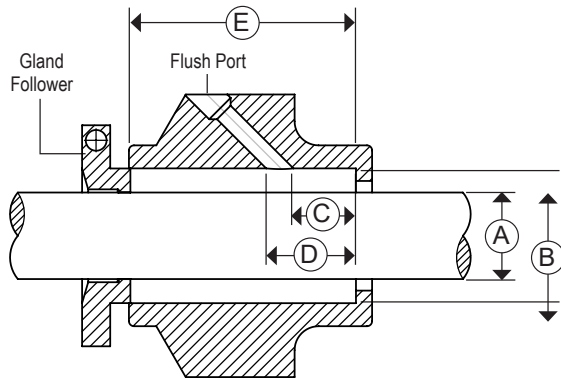
Max Speed:

4000+ fpm
 (Non-contact design)

*For higher speeds, contact
 A.R. Thomson.

FLOW PRO™ SEALING SYSTEM

- (1) FLOW PRO split bushing
- (3) Ultra-Pak flexible graphite braided packing rings
- (1) Thomson Flowmeter ESF1335-PSEXXX
- (1) SS metal pump tag
- (2) Pullers, installation lubricant & instructions



APPLICATION DATA

Customer _____

Equip. Manufacturer _____

Equip. Model _____

Equip. Reference Number _____

DIMENSIONS

A _____ Sleeve/shaft

B _____ Stuffing box bore

C _____ Bottom of s/box to beginning of flush port

D _____ Bottom of s/box to end of flush port

E _____ Stuffing box OA length

OPERATING CONDITIONS

Media: _____

Pressure: _____ bar or psig

Temperature: _____ °F or °C

Shaft Speed: _____ rpm

NOTES

- (1) Split gasket Thomson CHEMLON 7510 or other suitable material for application.
- (2) Thomson compression packing - select as per application requirements.
- (3) Flow Pro bushing - multiple configurations and materials available.

FLOW PRO Bushings and Thomson Compression Packing - multiple configurations, options and materials available. Please discuss application specific details with your A.R. Thomson Group Inc. Account Manager for an engineered and reliable solution.

Limitation of liability: actual performance may vary and is determined by factors unique to a given application. It is recommended that care be taken in the selection and application of materials for hazardous services and controlled testing be undertaken to determine suitability for a specific application. A.R. Thomson Group Inc. does not make or imply any warranty of suitability for a particular purpose and is not liable for any damages arising from the use of the information in this sheet.



Locations across Canada to serve you. For your nearest branch, please visit: www.arthomson.com
 Copyright © A.R. Thomson Group Inc. - All rights reserved.