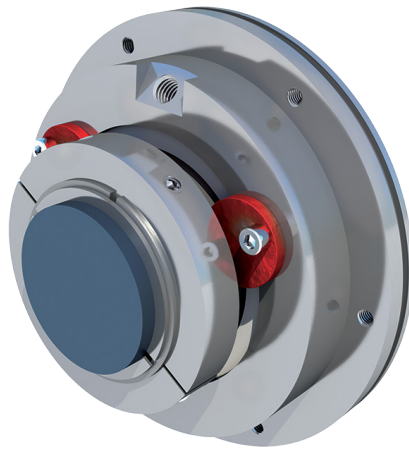


## Thomson Mechanical Seals

# TSP



### Thomson Slurry Pro heavy duty flush less slurry seal.

The Thomson Slurry Pro is an engineered seal able to operate in 60% solids and greater with customizable gland and hardware to fit your specific application.

#### FEATURES / BENEFITS

- Up to 60% solids without flush or environmental controls required.
- Robust seal face, gland and component geometry.
- Abrasion and corrosion resistant metallurgy matching the pump wetted parts.
- Pre-set cartridge simplifying installation.
- Balanced design.

#### TYPICAL APPLICATIONS

- Heavy slurry applications (to 60%).
- Acidic and chemically aggressive media.
- Mining.
- Ore processing.
- Pulp and Paper.

#### SPECIFICATIONS

All operating range information is dependent on media, materials of construction, and support systems used. Please contact A.R. Thomson mechanical seal services department for more information.

<b>Temperatures:</b>	<b>Max Pressure:</b>
+180°F (+80°C) without quench	300 PSI (20 bar)
+300°F (+150°C) with quench	<b>Slurry %, Max:</b>
<b>Particle Hardness, Max:</b>	60
MOH 9	

#### STANDARD MATERIALS

**Wetted Parts\*:** CD4MCuN  
**Face Materials:** Silicone Carbide, Tungsten Carbide  
**Elastomers:** FKM, Aflas, EPDM  
**Springs:** Hastelloy C

\*Other abrasion/corrosion-resistant materials available.

## OTHER PRODUCTS

### METALLIC GASKETS



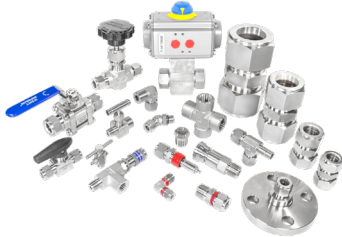
Thomson CANFLEX® spiral wound, Kammprofile, high temperature, heat exchanger and ring joint gaskets. We manufacture gaskets from all common metals, exotic alloys and filler materials in all configurations for the most extreme applications.



### FASTENERS

All thread studs – ASTM 193 Grade B7, B7M, B8, B8M, B16, ASTM A320 L7, L7M; heavy hex nuts – ASTM A194 Grade 2H, 2HM, 4, L7, L7M, 8 and 8M; Through hardened washers – ASTM F-436; custom coatings; specialty fabricated and machined studs; CANFLEX® approved thread lubricant.

### SUPERLOK CANADA



Instrumentation Tube, Pipe, JIC and DIN Fittings. Instrumentation Ball, Bleed, Check, Double Block and Bleed, Needle, Plug, and Purge Relief Valves. Quick Connects and Filters. Flexible Metal Hose, Tubing and Accessories.



### MECHANICAL SEALS

Advanced cartridge and component seals for pumps, mixers, compressors and other rotating equipment. Seal replacements for major brands such as John Crane, Flowserve, AES and more.

## AUTHORIZED DISTRIBUTOR



Limitation of liability: actual performance may vary and is determined by factors unique to a given application. It is recommended that care be taken in the selection and application of materials for hazardous services and controlled testing be undertaken to determine suitability for a specific application. A.R. Thomson Group Inc. does not make or imply any warranty of suitability for a particular purpose and is not liable for any damages arising from the use of the information in this sheet.



Locations across Canada to serve you. For your nearest branch, please visit: [www.arthomson.com](http://www.arthomson.com)  
Copyright © A.R. Thomson Group Inc. - All rights reserved.